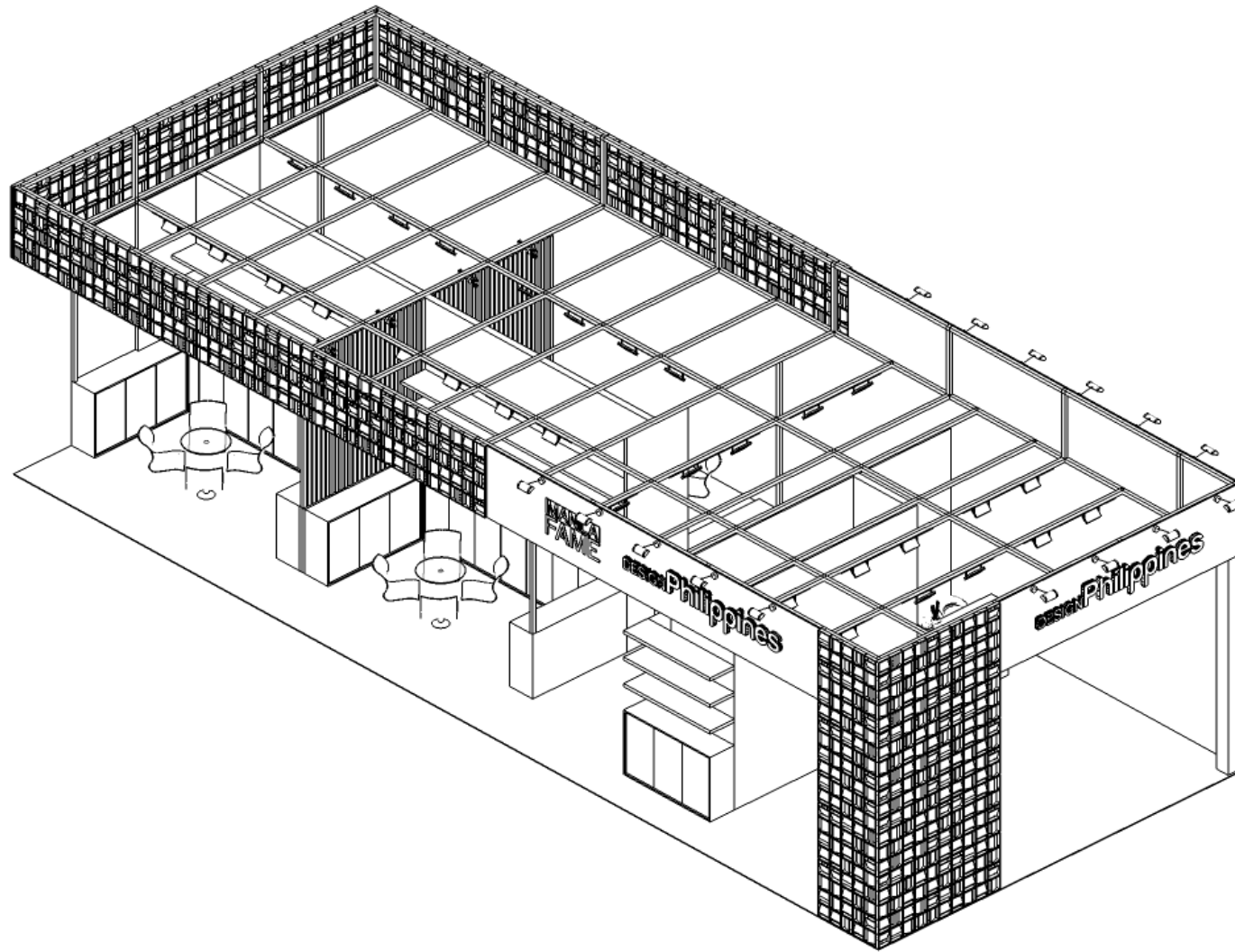


PHILIPPINE PAVILION AT TOKYO INTERNATIONAL GIFT SHOW 2025



The 100th TOKYO INTERNATIONAL
Gift Show
Autumn 2025

9/3[水]4[木]5[金]
10:00~18:00[最終日は17:00まで]
西3.4ホール
[レイアウト]

PHILIPPINES - CENTER FOR INTERNATIONAL TRADE EXPOSITIONS AND MISSIONS

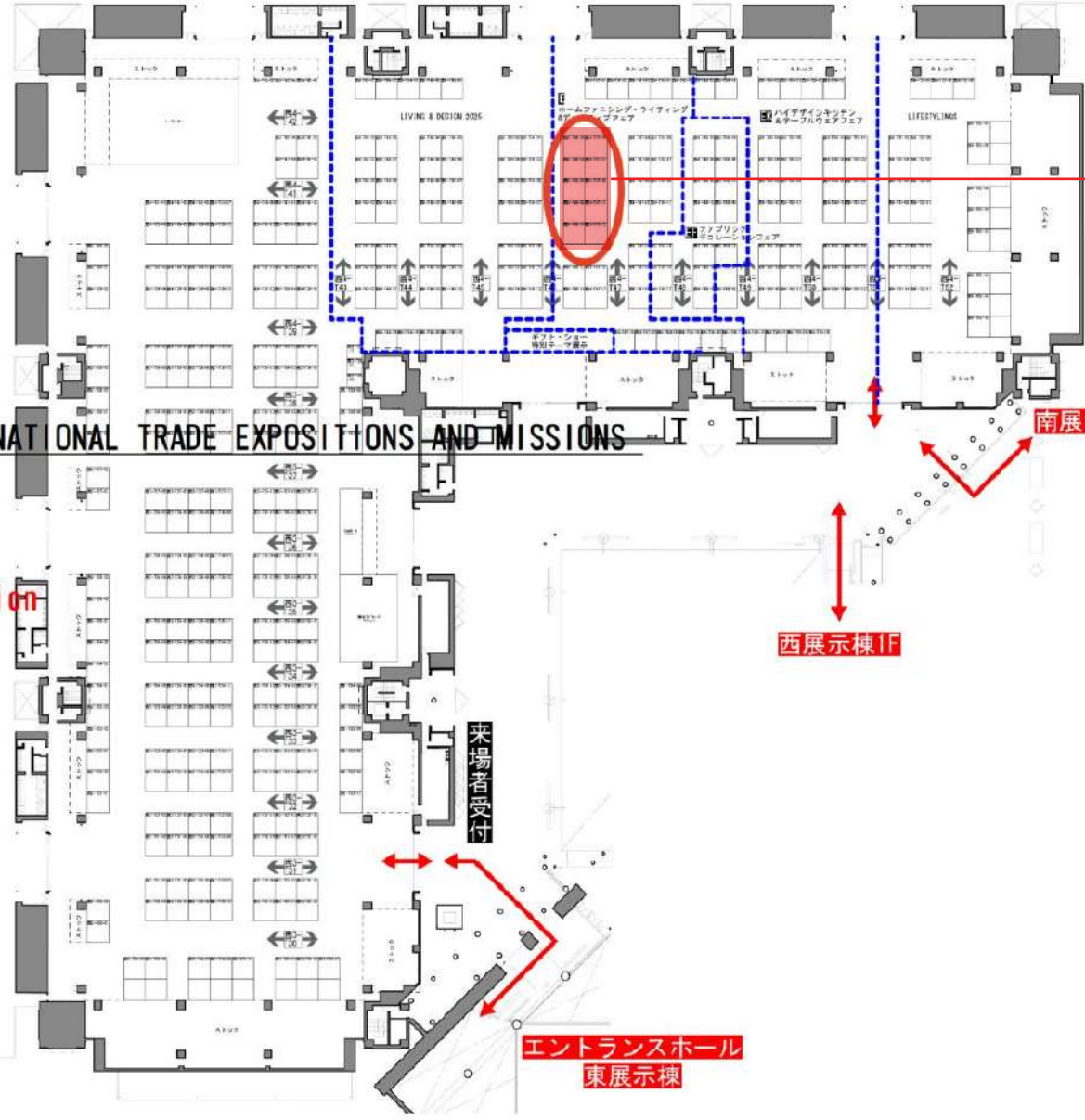
Your Booth:

WEST4-T46-02

Please check your booth location

Exhibition area: E2

QTY of booth: 10



**PHILIPPINE
PAVILION**

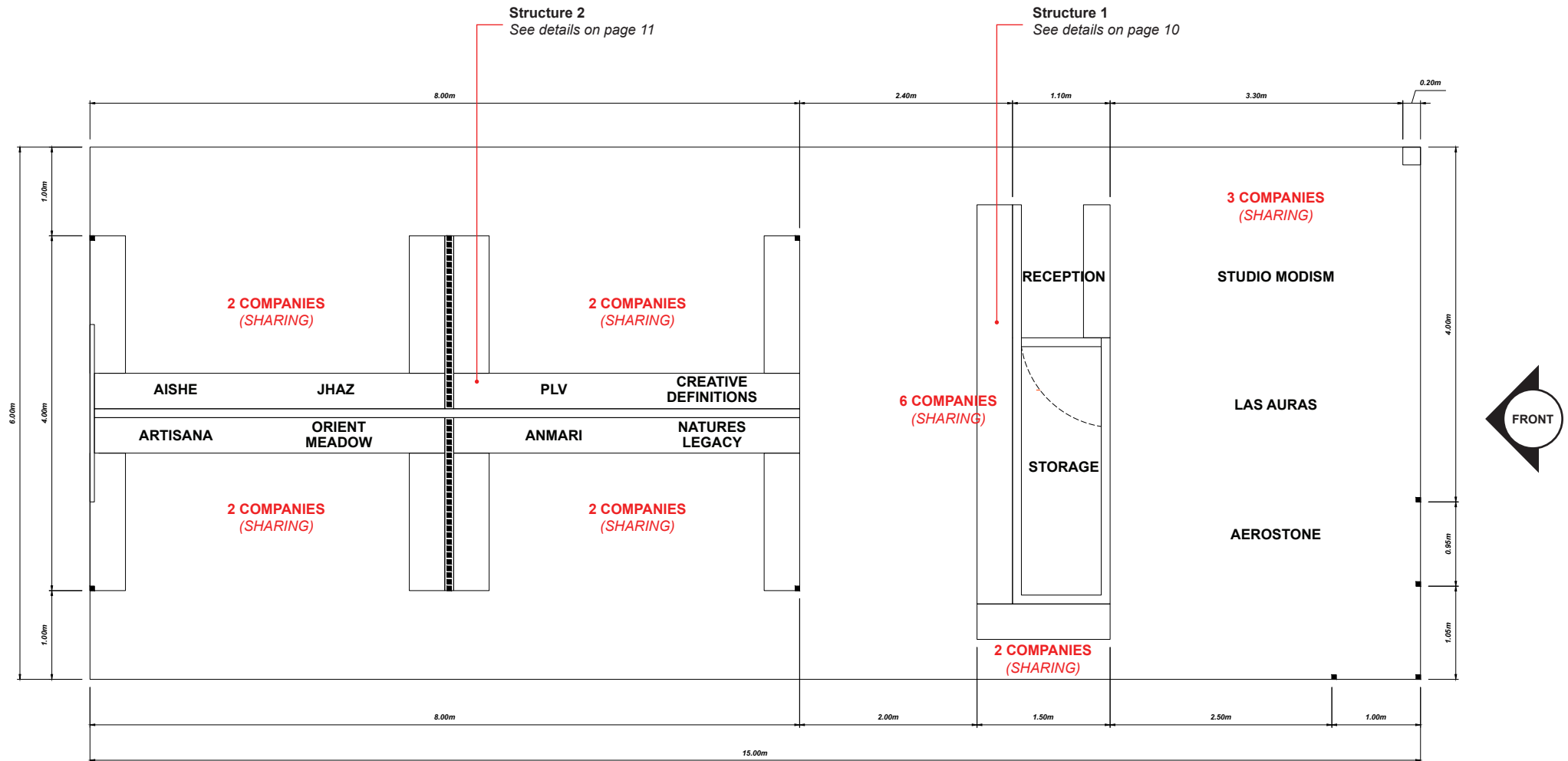
		PROJECT: TOKYO INTERNATIONAL GIFT SHOW 2025	CONTENT: DETAILS
		TITLE: PHILIPPINE PAVILION	DESIGNER: MIR
DATE: 2025/08/07	REVISION: 00	LOCATION: TOKYO BIG SIGHT, TOKYO, JAPAN	SHEET NO. 2



	PROJECT: TOKYO INTERNATIONAL GIFT SHOW 2025		CONTENT: DETAILS
	TITLE: PHILIPPINE PAVILION		DESIGNER: MIR
DATE: 2025/08/07	REVISION: 00	LOCATION: TOKYO BIG SIGHT, TOKYO, JAPAN	SHEET NO: 3

EXHIBITOR PLOTTING

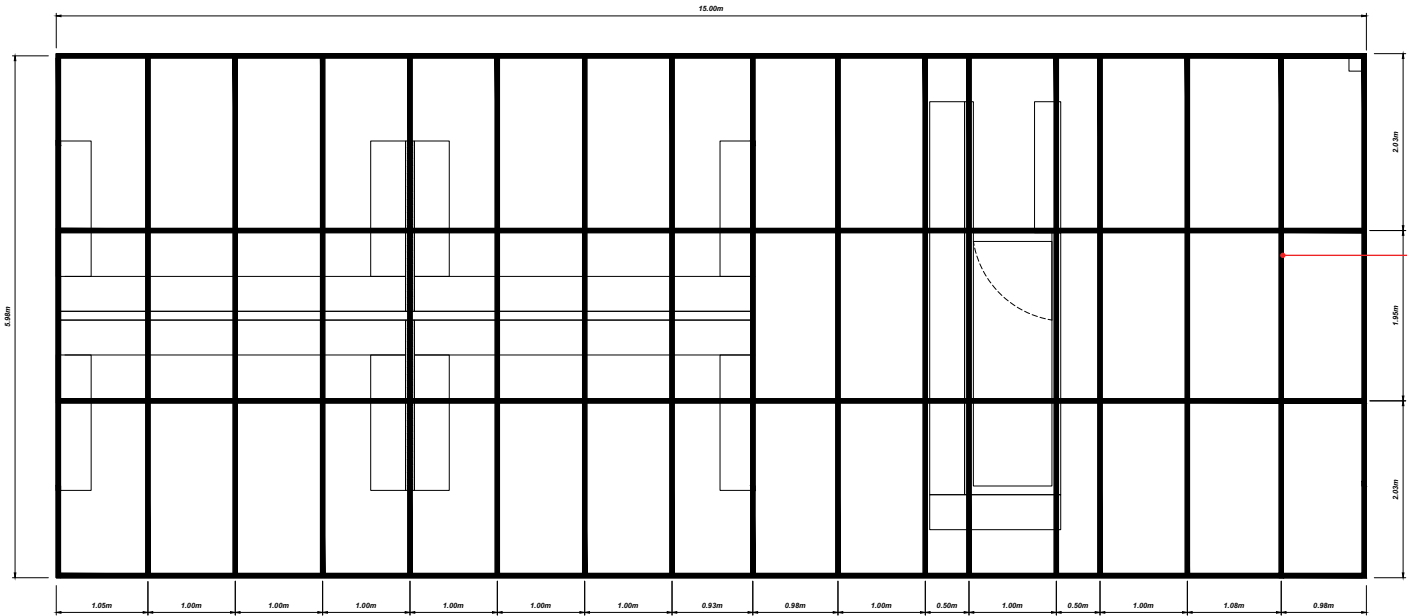
NOTE: OVERHEAD STRUCTURE ARE
NOT SHOWN FOR CLARITY



TOP ELEVATION

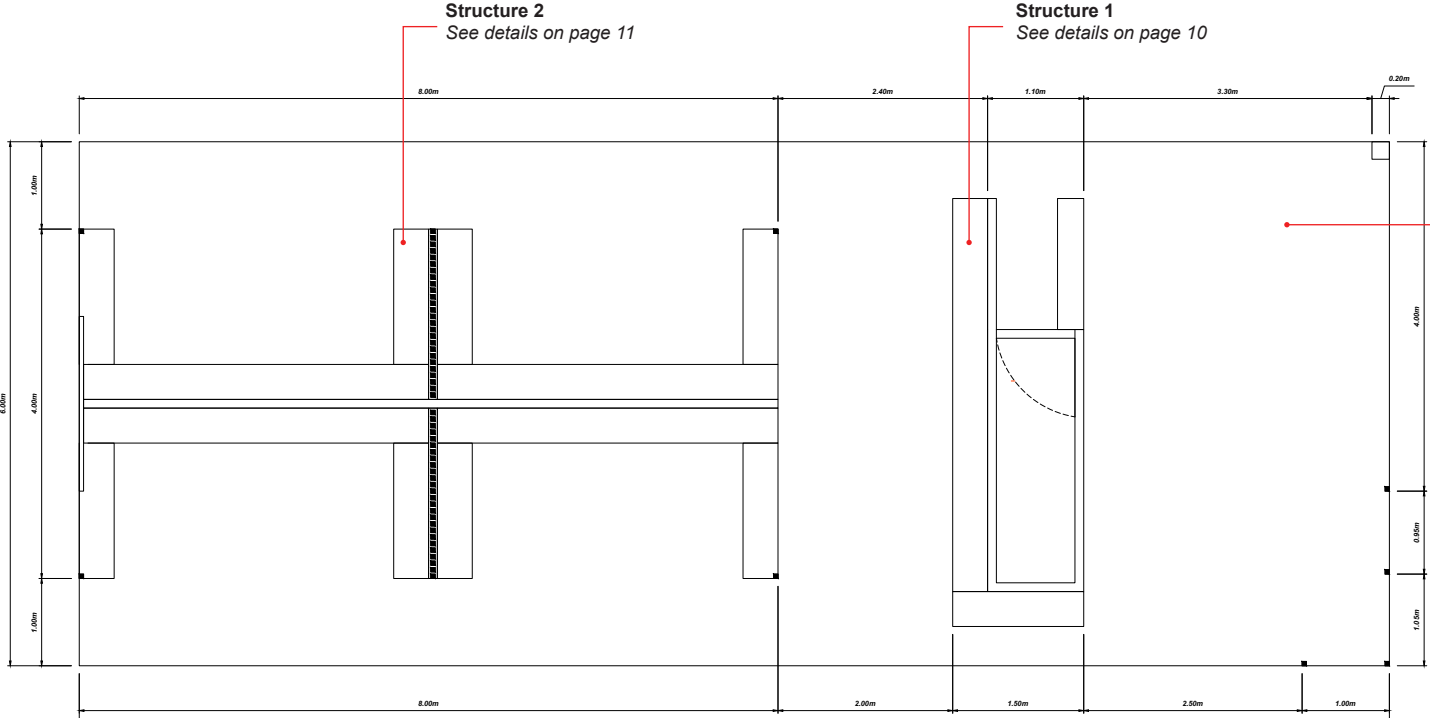
		PROJECT: TOKYO INTERNATIONAL GIFT SHOW 2025	CONTENT: DETAILS
		TITLE: PHILIPPINE PAVILION	DESIGNER: MIR
DATE: 2025/08/07	REVISION: 00	LOCATION: TOKYO BIG SIGHT, TOKYO, JAPAN	SHEET NO: 4

FLOOR PLAN



PLAN VIEW WITH OVERHEAD

Overhead Structure
2" x 2" x 1.5mm Square tubular steel
painted in **PANTONE 2176 U**
See details on page 08



PLAN VIEW

Structure 1
See details on page 10

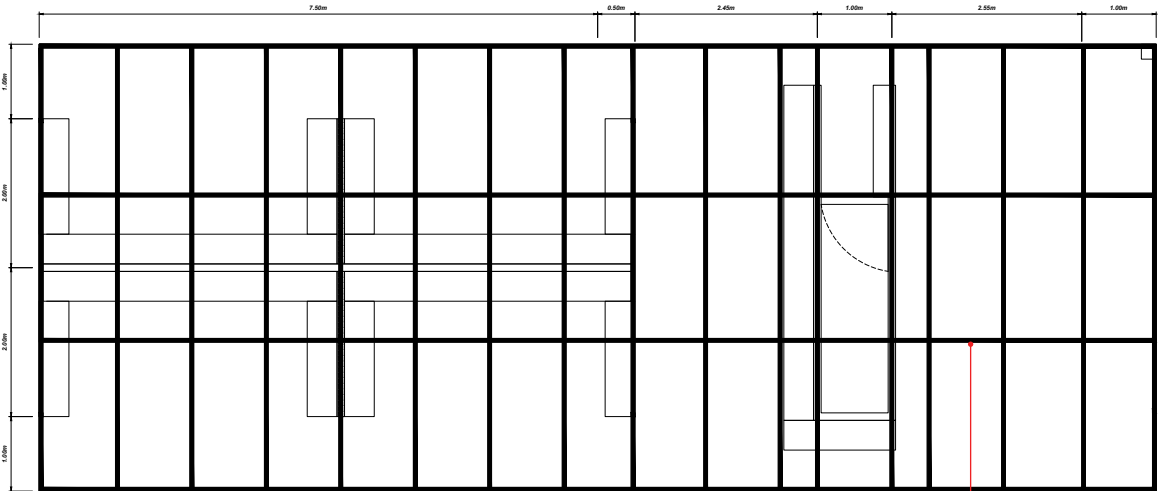
Structure 2
See details on page 11

FLOORING
CHARCOAL GREY
6.00m x 15.00m



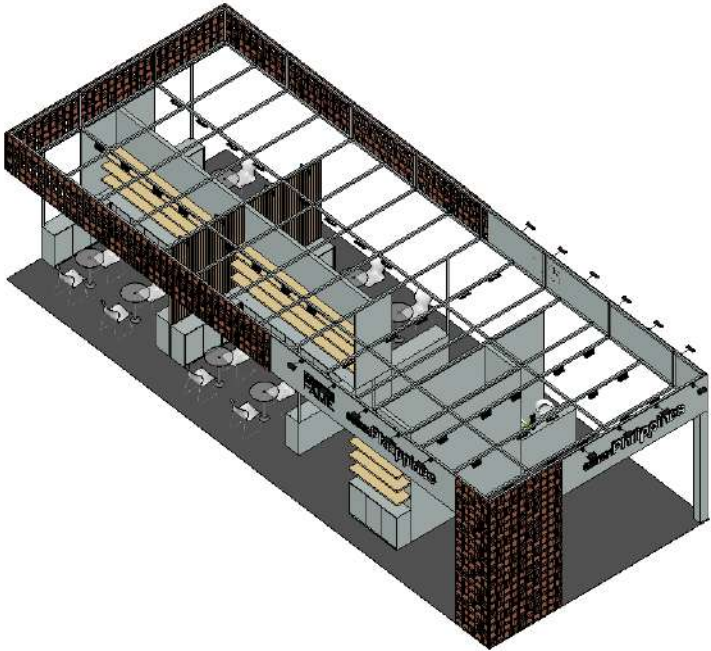
 EXHIBITION AND DESIGN DIVISION		PROJECT: TOKYO INTERNATIONAL GIFT SHOW 2025	CONTENT: DETAILS
DATE: 2025/08/07		TITLE: PHILIPPINE PAVILION	DESIGNER: MIR
REVISION: 00		LOCATION: TOKYO BIG SIGHT, TOKYO, JAPAN	SHEET NO.: 5

PAVILION STRUCTURE

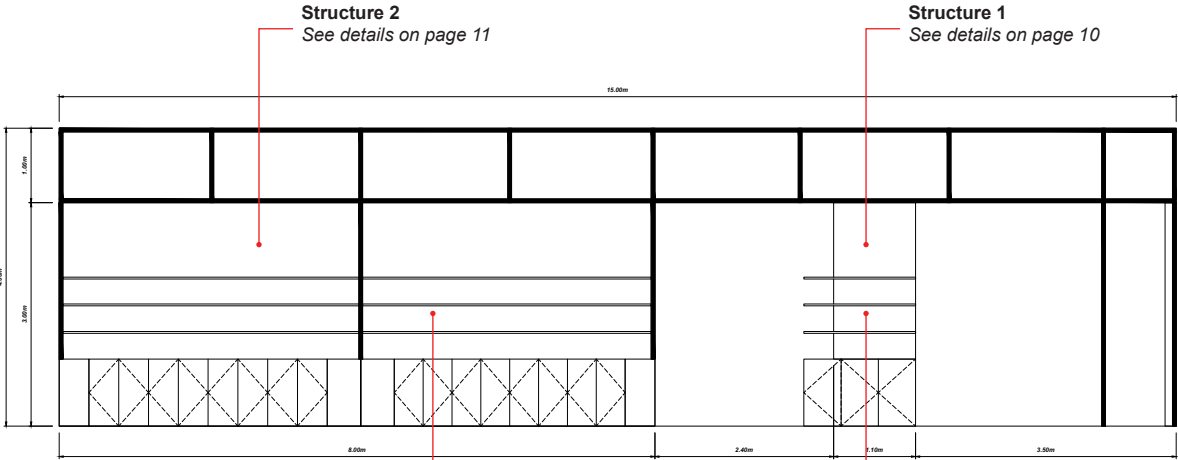


TOP ELEVATION

Overhead Structure
2" x 2" x 1.5mm Square tubular
steel painted in **PANTONE 2176 U**
See details on page 08



PERSPECTIVE



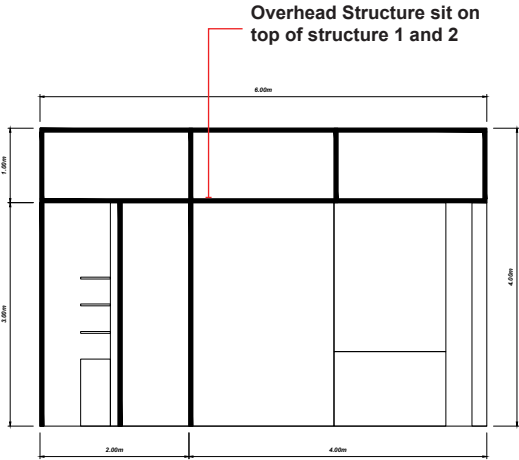
LEFT SIDE ELEVATION

Structure 2
See details on page 11

Structure 1
See details on page 10

Structure 2
in 3/4" Plywood with 2" x 2"
Klin dried framing painted
in **PANTONE 2176 U**

Structure 1
in 3/4" Plywood with 2" x 2"
Klin dried framing painted
in **PANTONE 2176 U**



FRONT ELEVATION

Overhead Structure sit on
top of structure 1 and 2

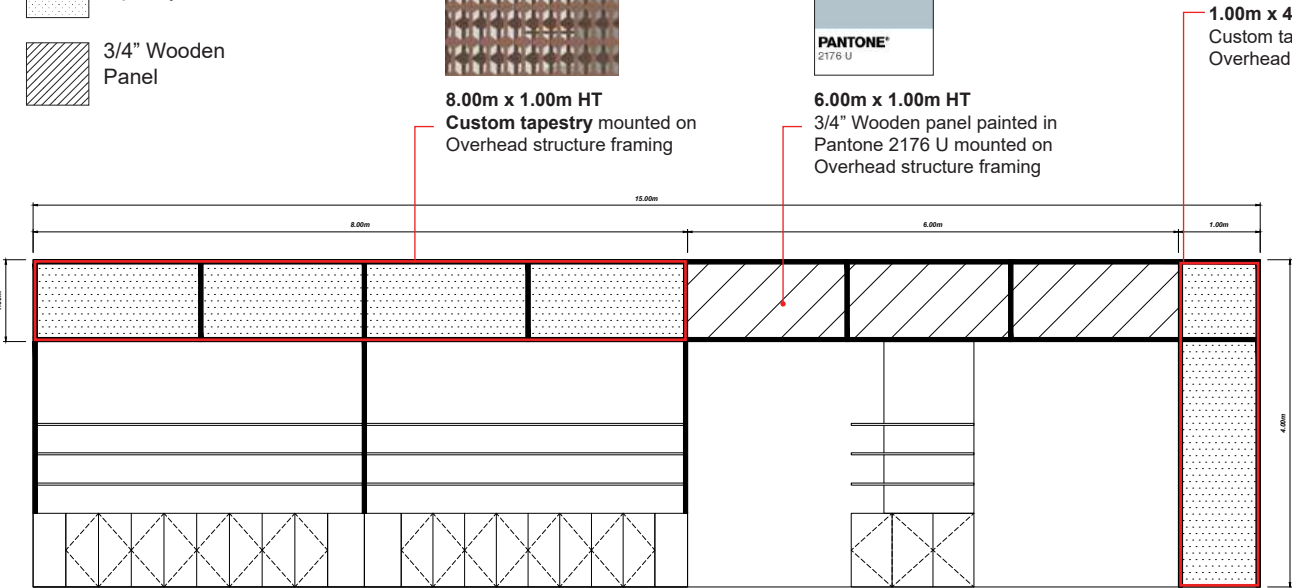
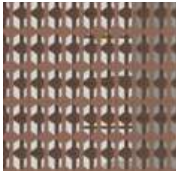
	PROJECT: TOKYO INTERNATIONAL GIFT SHOW 2025		CONTENT: DETAILS
	TITLE: PHILIPPINE PAVILION		DESIGNER: MIR
DATE: 2025/08/07	REVISION: 00	LOCATION: TOKYO BIG SIGHT, TOKYO, JAPAN	SHEET NO: 6

PAVILION STRUCTURE
CUSTOM TAPESTRY

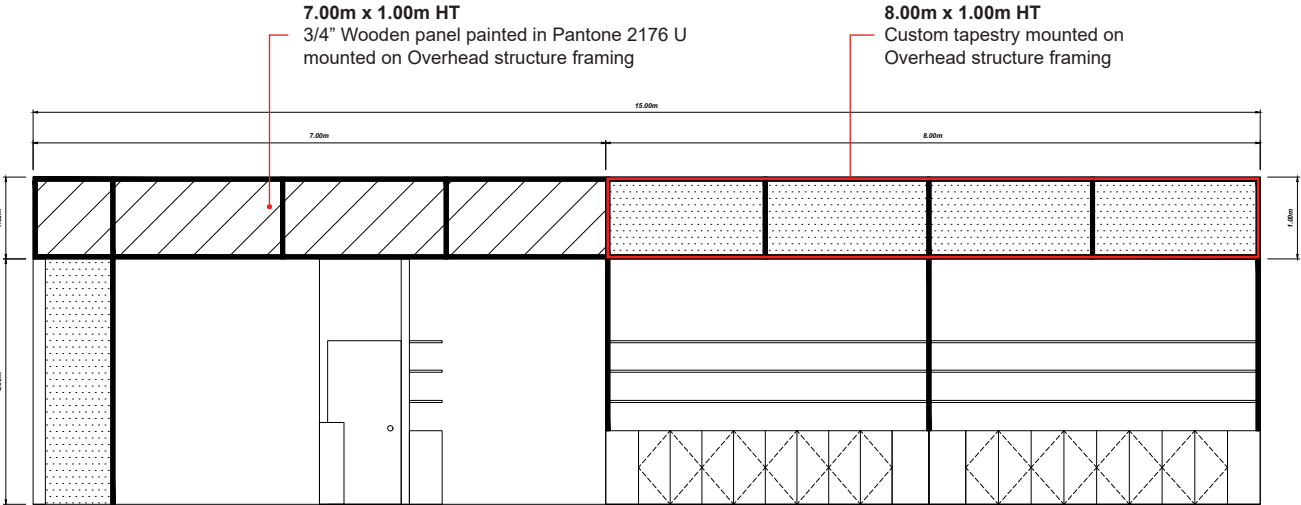
NOTE: PURCHASE AND SHIPPING OF THE CUSTOM TAPESTRY ARE INCLUDED IN THE CONTRACT. THE CONTRACTOR SHALL COORDINATE DIRECTLY WITH THE TAPESTRY SUPPLIER.

LEGEND:

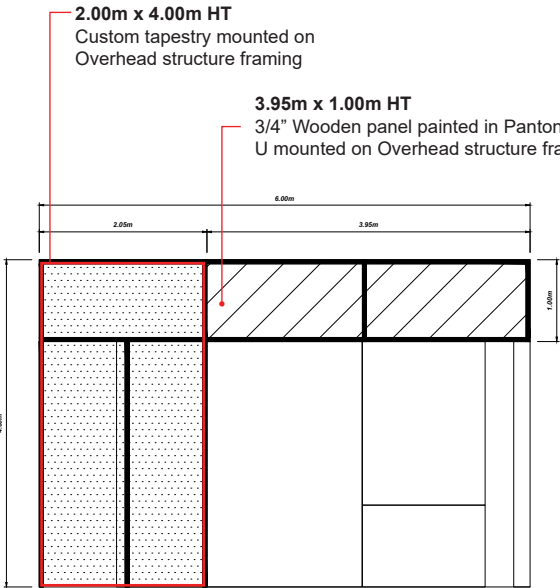
- Custom tapestry
- 3/4" Wooden Panel



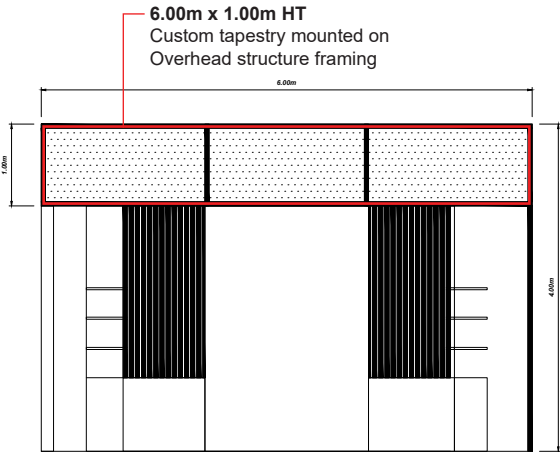
LEFT SIDE ELEVATION



RIGHT SIDE ELEVATION



FRONT ELEVATION

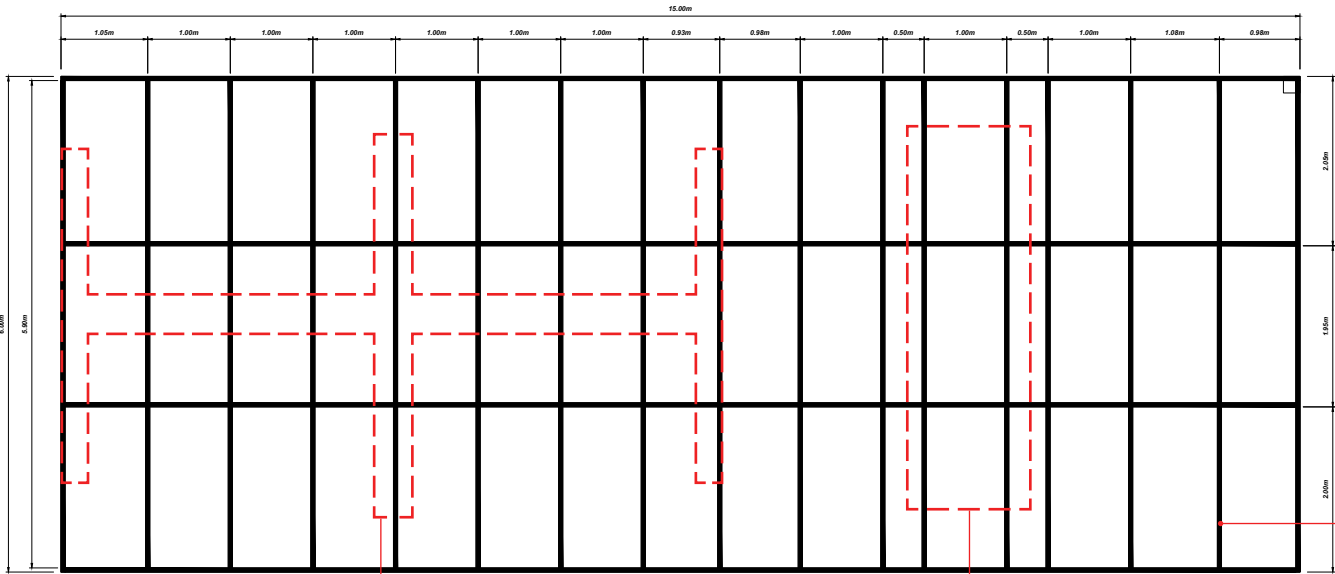


REAR ELEVATION

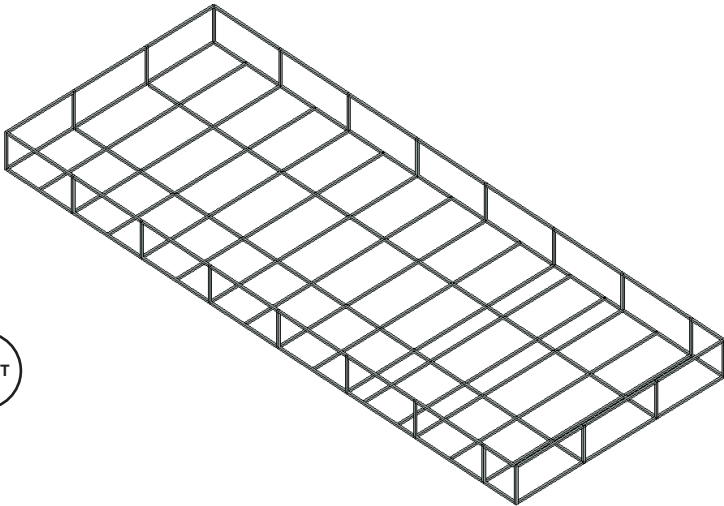
	PROJECT:	TOKYO INTERNATIONAL GIFT SHOW 2025	CONTENT:	DETAILS
	TITLE:	PHILIPPINE PAVILION	DESIGNER:	MIR
	DATE:	2025/08/07	REVISION:	00
	LOCATION:	TOKYO BIG SIGHT, TOKYO, JAPAN	SHEET NO.:	7

OVERHEAD STRUCTURE

NOTE: STRUCTURE 1 AND 2 ARE NOT SHOWN FOR CLARITY

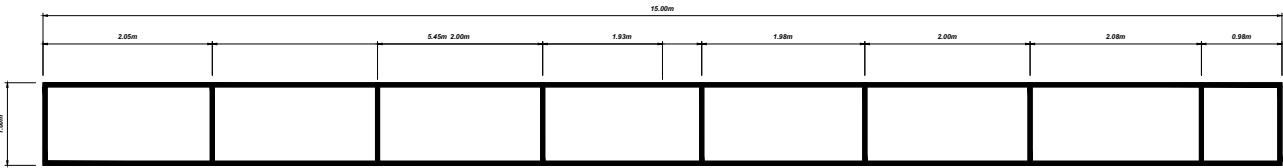


TOP ELEVATION

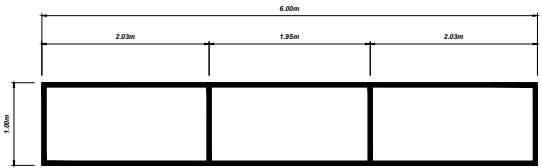


PERSPECTIVE

Overhead Structure
2" x 2" x 1.5mm Square tubular steel
painted in PANTONE 2176 U

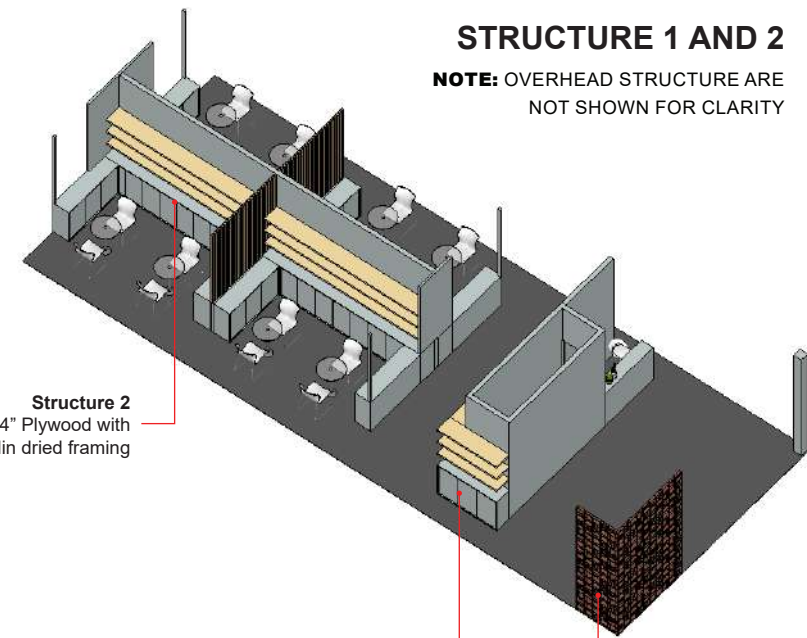
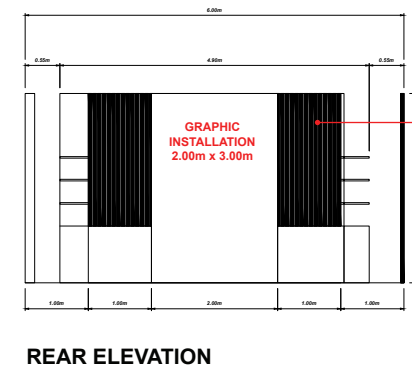
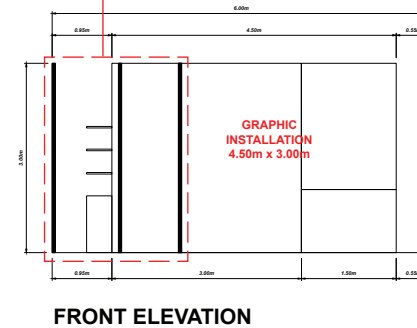
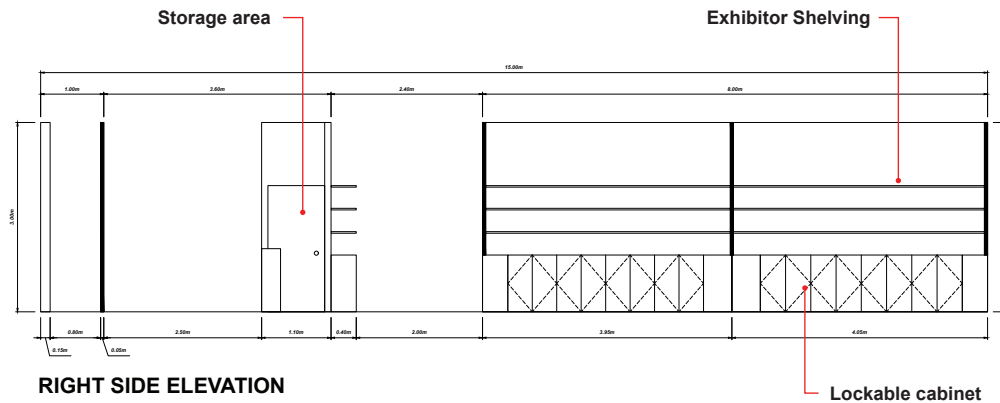
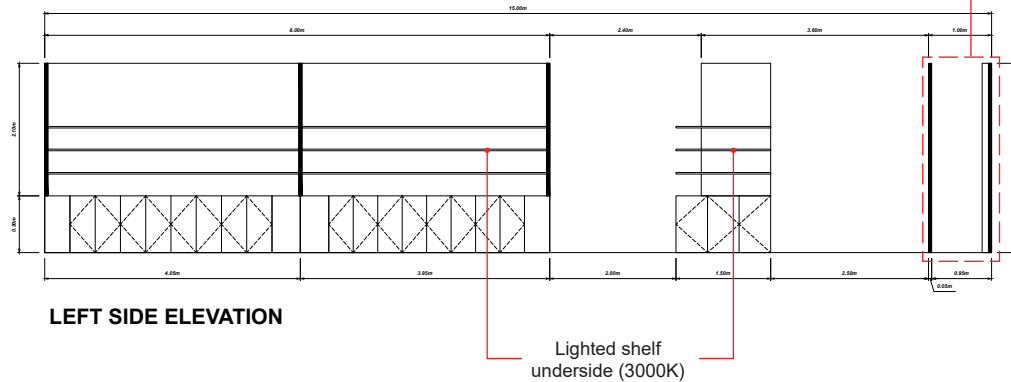
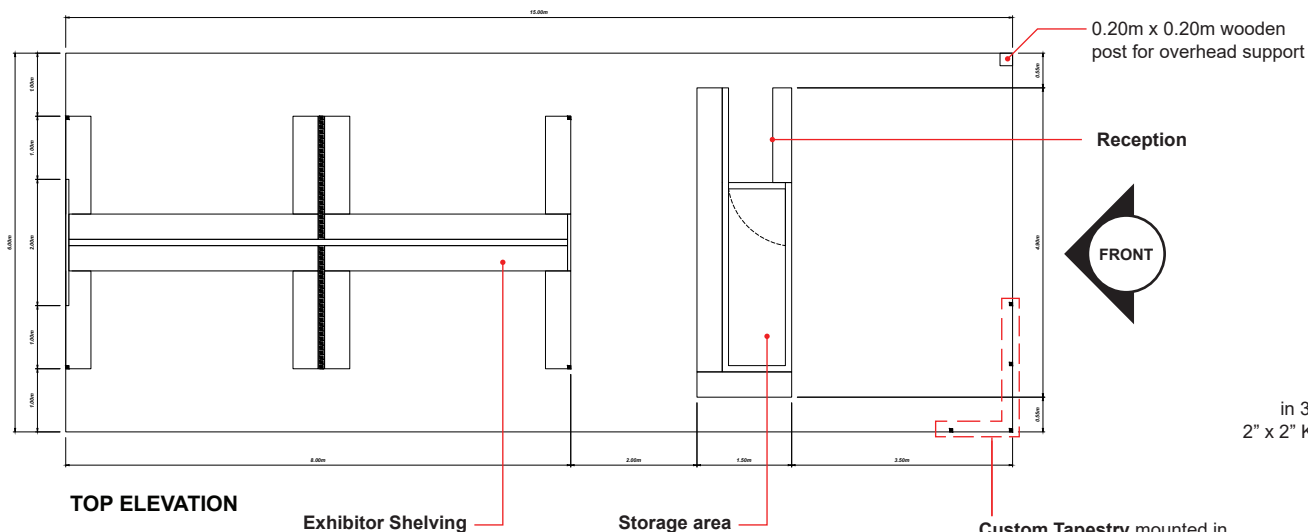


LEFT SIDE ELEVATION



FRONT ELEVATION

 EXHIBITION AND DESIGN DIVISION		PROJECT: TOKYO INTERNATIONAL GIFT SHOW 2025		CONTENT: DETAILS	
		TITLE: PHILIPPINE PAVILION		DESIGNER: MIR	
DATE: 2025/08/07		REVISION: 00		LOCATION: TOKYO BIG SIGHT, TOKYO, JAPAN	
				SHEET NO: 8	

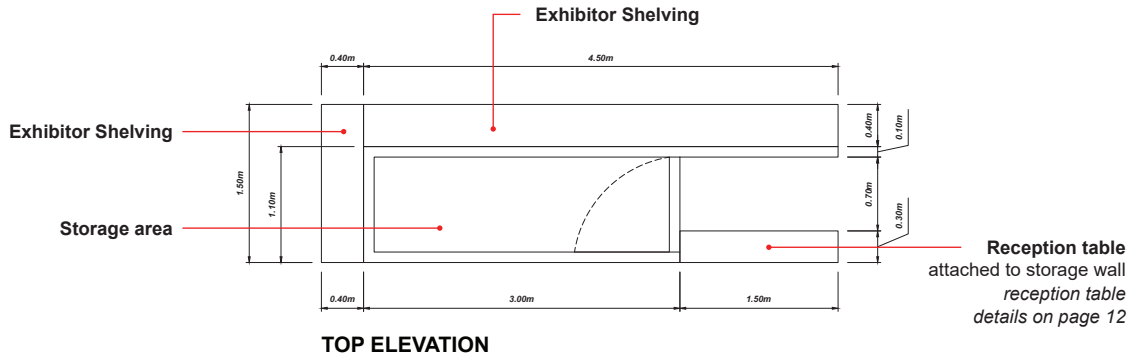


STRUCTURE 1 AND 2
NOTE: OVERHEAD STRUCTURE ARE
 NOT SHOWN FOR CLARITY

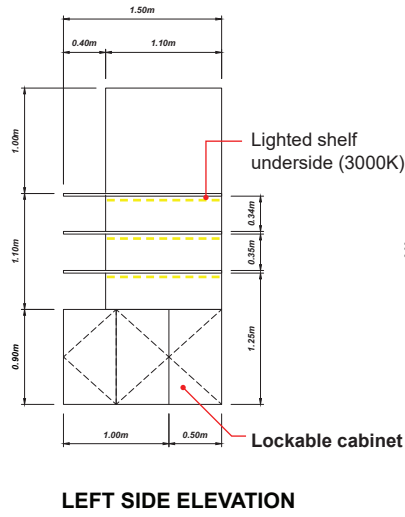
Custom Tapestry mounted in
 2" x 2" x 1.5mm Square tubular
 steel painted in **PANTONE 2176 U**

	PROJECT:	TOKYO INTERNATIONAL GIFT SHOW 2025	CONTENT:	DETAILS
	TITLE:	PHILIPPINE PAVILION	DESIGNER:	MIR
DATE:	REVISION:	LOCATION:	SHEET NO.	
2025/08/07	00	TOKYO BIG SIGHT, TOKYO, JAPAN	9	

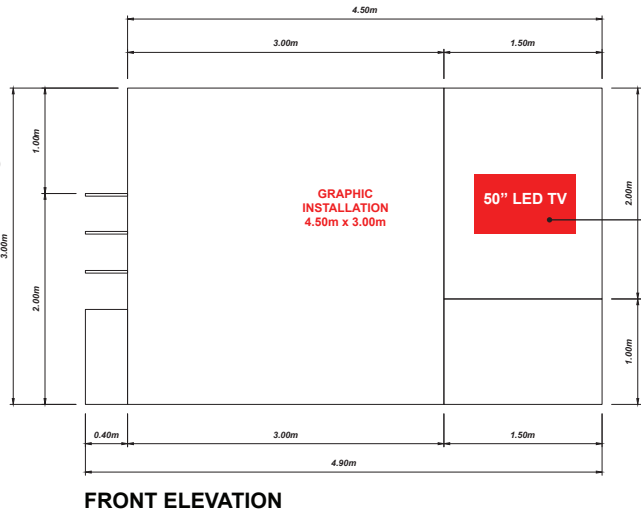
STRUCTURE 1



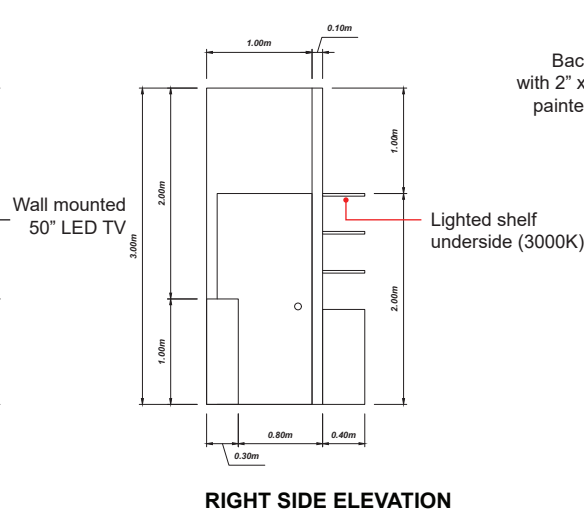
TOP ELEVATION



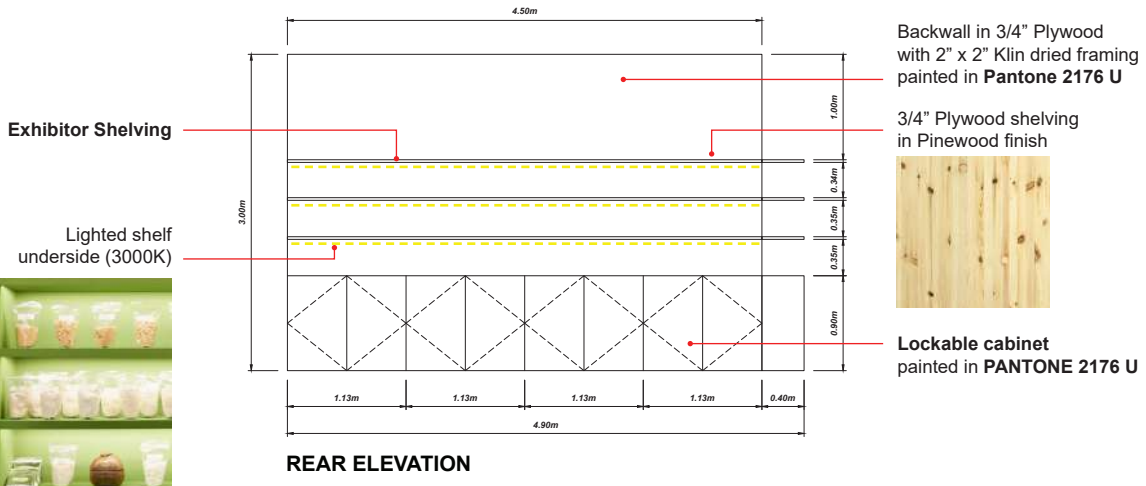
LEFT SIDE ELEVATION



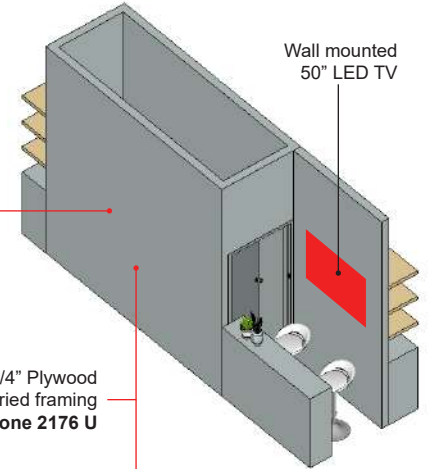
FRONT ELEVATION



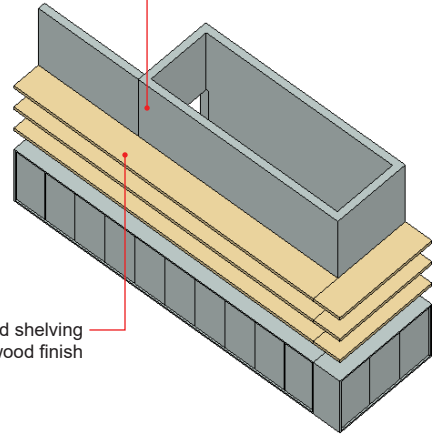
RIGHT SIDE ELEVATION



REAR ELEVATION



FRONT PERSPECTIVE

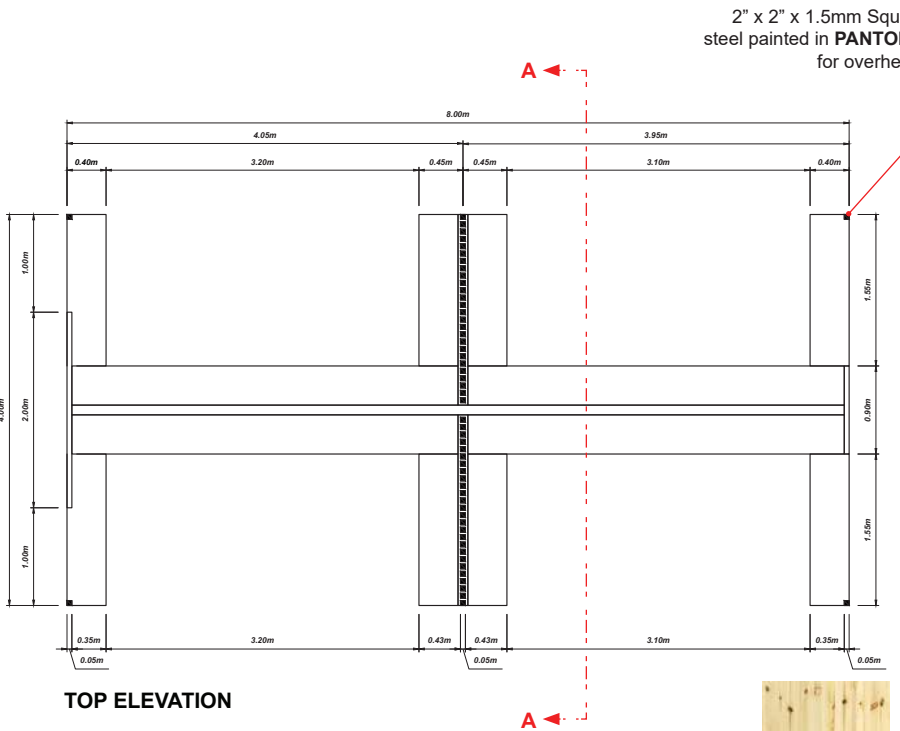


REAR PERSPECTIVE

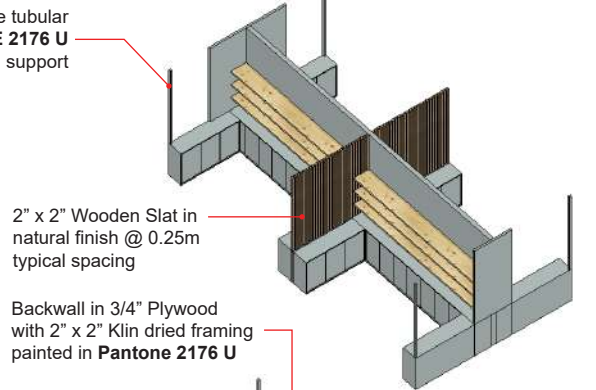


		PROJECT: TOKYO INTERNATIONAL GIFT SHOW 2025	CONTENT: DETAILS
TITLE: PHILIPPINE PAVILION		DESIGNER: MIR	
DATE: 2025/08/07	REVISION: 00	LOCATION: TOKYO BIG SIGHT, TOKYO, JAPAN	SHEET NO: 10

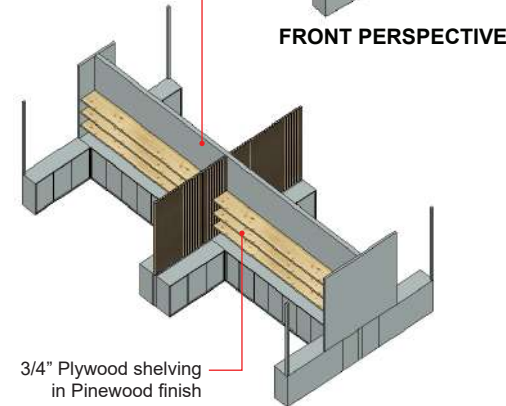
STRUCTURE 2



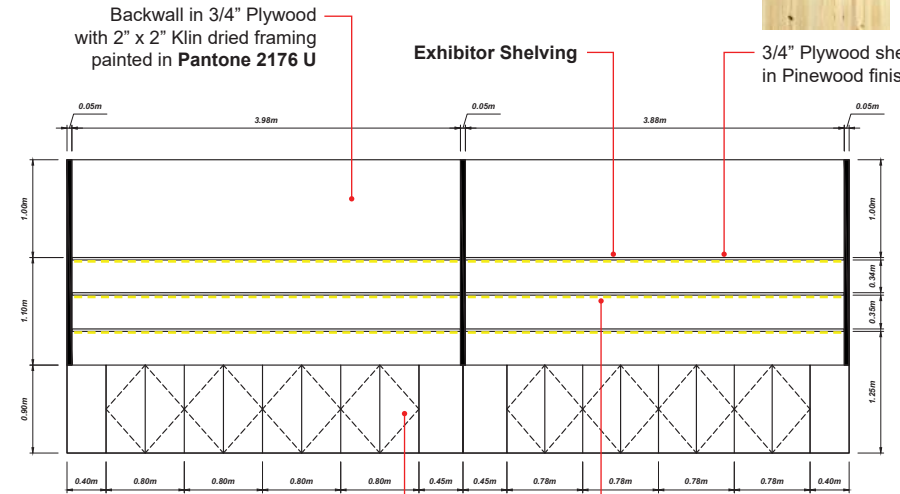
TOP ELEVATION



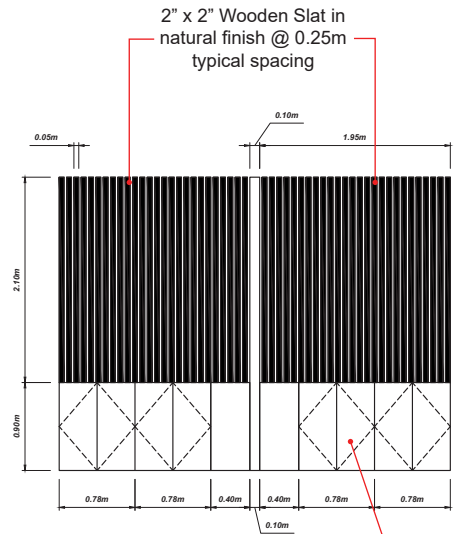
FRONT PERSPECTIVE



REAR PERSPECTIVE

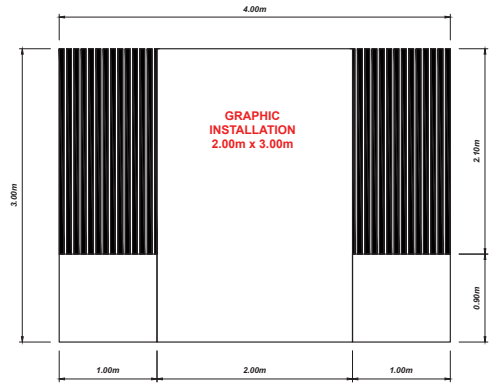


LEFT SIDE ELEVATION

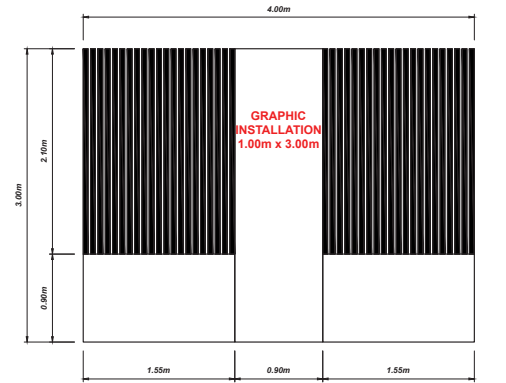


SECTION A-A

Lockable cabinet



REAR ELEVATION

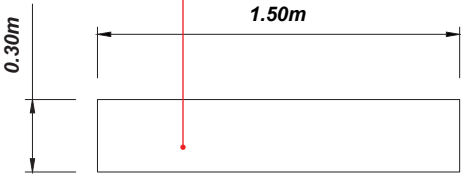


FRONT ELEVATION

 CREM EXHIBITION AND DESIGN DIVISION	PROJECT: TOKYO INTERNATIONAL GIFT SHOW 2025	CONTENT: DETAILS
	TITLE: PHILIPPINE PAVILION	DESIGNER: MIR
DATE: 2025/08/07	REVISION: 00	LOCATION: TOKYO BIG SIGHT, TOKYO, JAPAN
		SHEET NO. 11

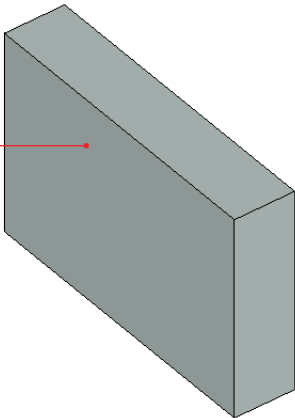
RECEPTION TABLE

Counter top in 3/4" Plywood
painted in **Pantone 2176U**

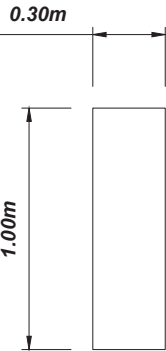


TOP ELEVATION

Reception table painted
in **Pantone 2176U**

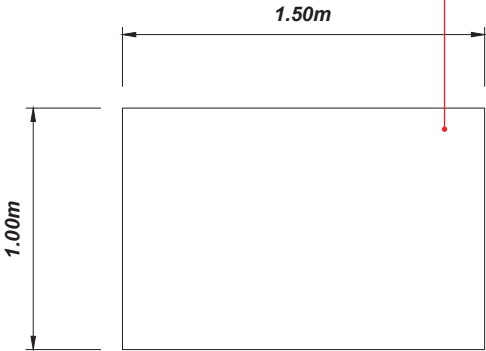


FRONT PERSPECTIVE

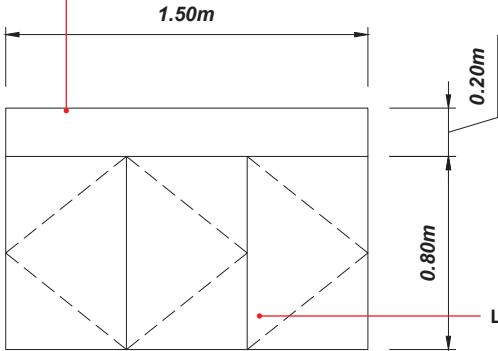


SIDE ELEVATION

3/4" Plywood painted
in **Pantone 2176 U**

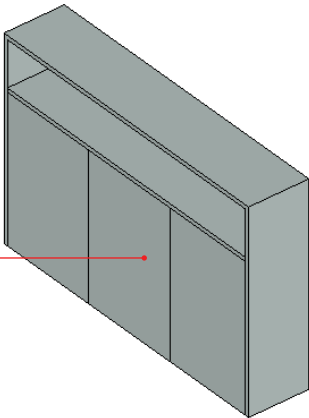


FRONT ELEVATION



REAR ELEVATION

Lockable cabinet



REAR PERSPECTIVE

 EXHIBITION AND DESIGN DIVISION	PROJECT: TOKYO INTERNATIONAL GIFT SHOW 2025		CONTENT: DETAILS	
	TITLE: PHILIPPINE PAVILION		DESIGNER: MIR	
DATE: 2025/08/07	REVISION: 00	LOCATION: TOKYO BIG SIGHT, TOKYO, JAPAN		SHEET NO: 12

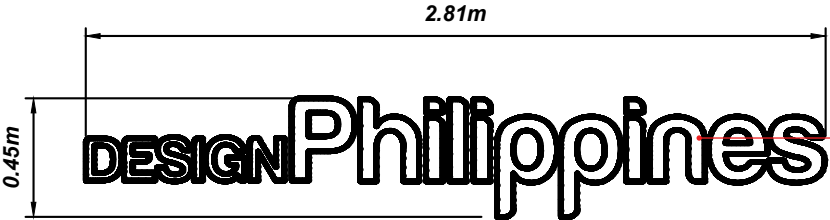
BACKLIT BUILT-UP LOGO

LEGEND:

Custom
tapestry

3/4" Wooden
Panel

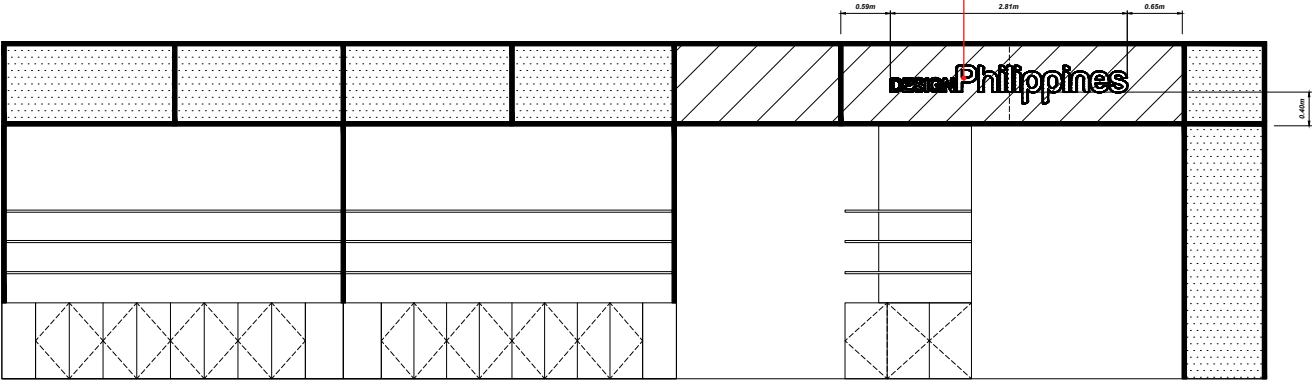




BUILT-UP LOGO

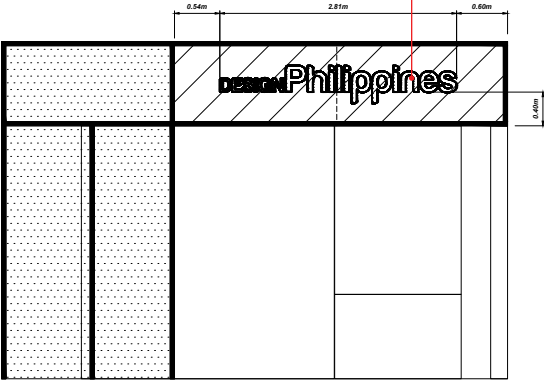
DESIGN PHILIPPINES logo cut-out mounted on overhead Backlit (3000K) in 2.81m x 0.45m x 2" THK wood

Backlit (3000K) logo cut-out mounted on Overhead structure



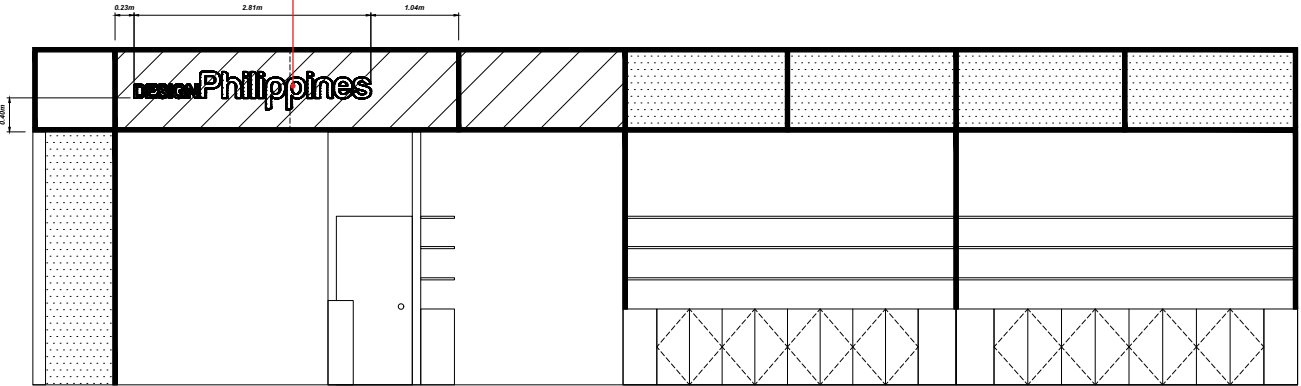
LEFT SIDE ELEVATION

Backlit (3000K) logo cut-out mounted on Overhead structure



FRONT ELEVATION

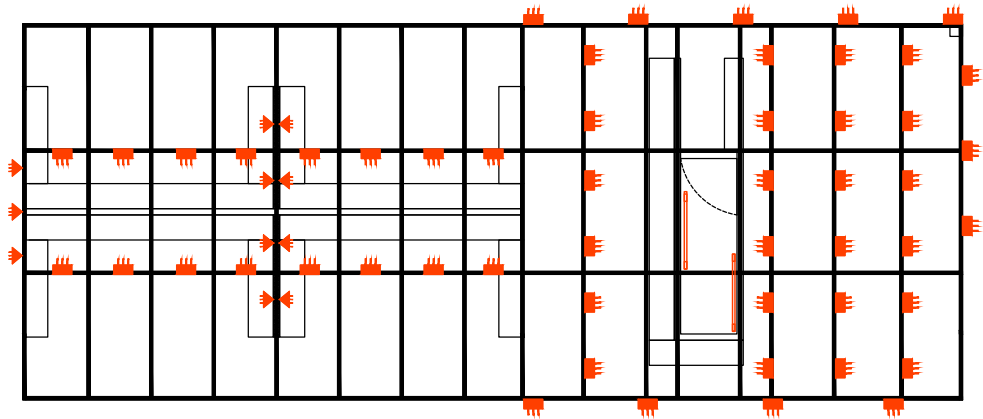
Backlit (3000K) logo cut-out mounted on Overhead structure






RIGHT SIDE ELEVATION

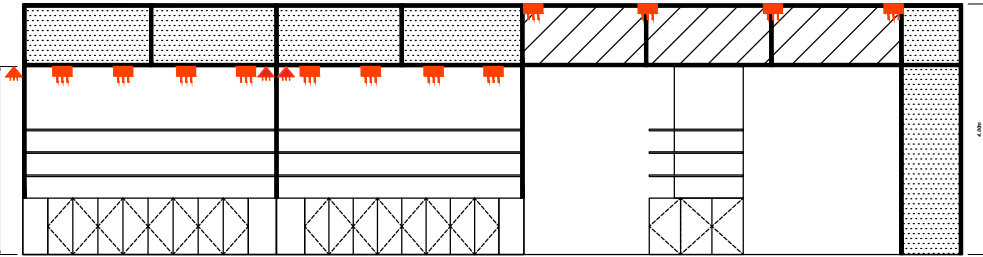
 EXHIBITION AND DESIGN DIVISION	PROJECT:	TOKYO INTERNATIONAL GIFT SHOW 2025	CONTENT:	DETAILS
	TITLE:	PHILIPPINE PAVILION	DESIGNER:	MIR
	DATE:	2025/08/07	REVISION:	00
	LOCATION:	TOKYO BIG SIGHT, TOKYO, JAPAN	SHEET NO.	13

LIGHTING

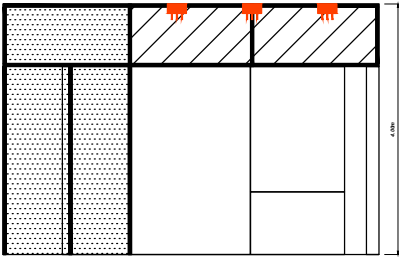


TOP ELEVATION

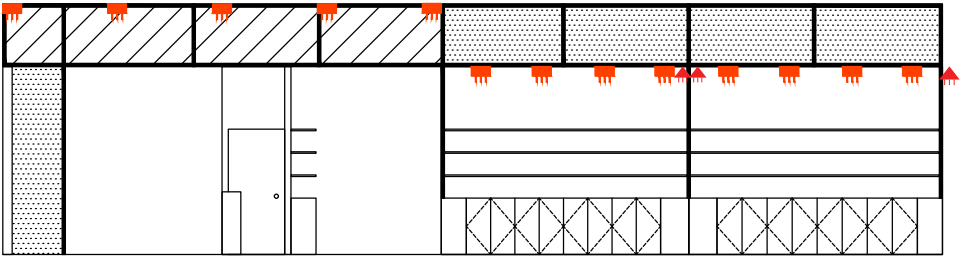
-  **52 UNITS** - 50W LED FLOOD LIGHTS (3000K) - BLACK CASING
-  **11 UNITS** - 20W LED SPOTLIGHT (3000K) - BLACK CASING
-  **2 UNITS** - FLOURECENT LIGHT



LEFT SIDE ELEVATION



FRONT ELEVATION

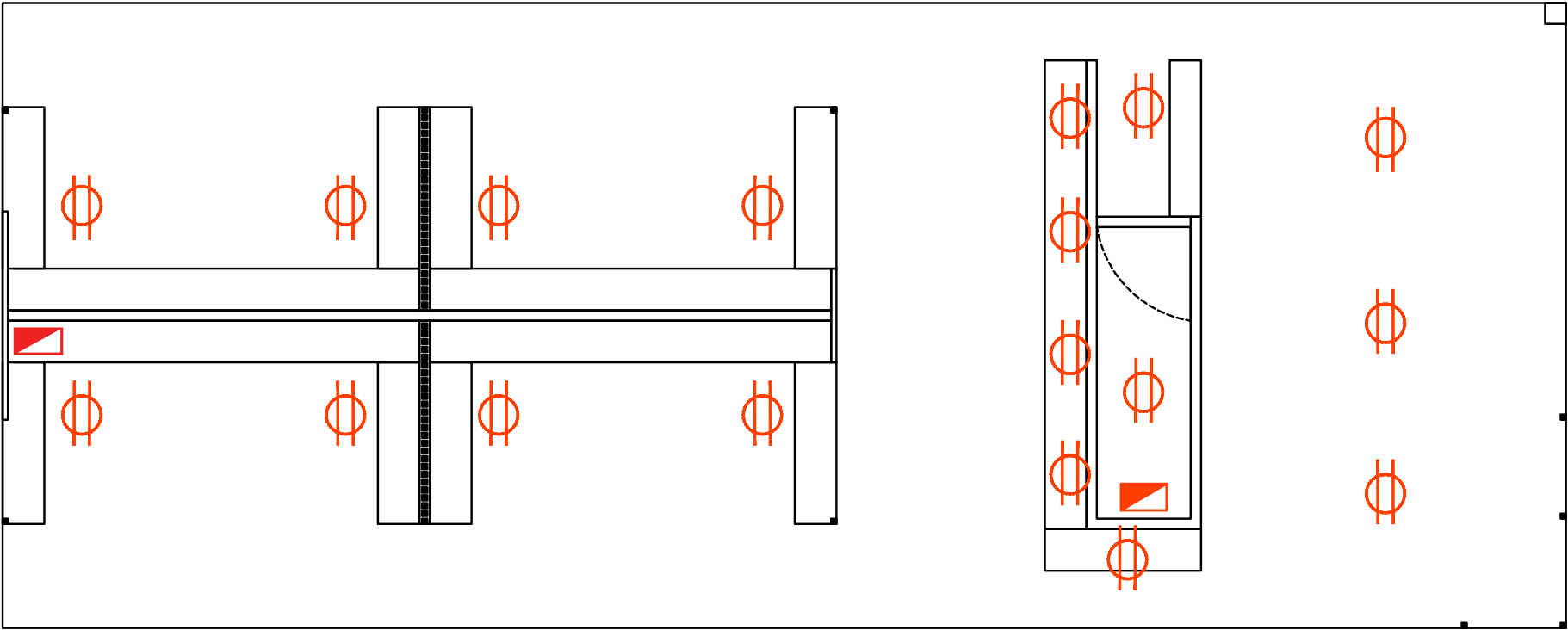


RIGHT SIDE ELEVATION

	PROJECT:	TOKYO INTERNATIONAL GIFT SHOW 2025	CONTENT:	DETAILS
	TITLE:	PHILIPPINE PAVILION	DESIGNER:	MIR
	DATE:	2025/08/07	REVISION:	00
	LOCATION:	TOKYO BIG SIGHT, TOKYO, JAPAN	SHEET NO.	14

 **18 UNITS** - 3 GANG CONVENIENCE
OUTLET

 **2 UNITS** - CIRCUIT BREAKER
CONTRACTOR TO PROVIDE RATING



TOP ELEVATION

 EXHIBITION AND DESIGN DIVISION	PROJECT:	TOKYO INTERNATIONAL GIFT SHOW 2025	CONTENT:	DETAILS
	TITLE:	PHILIPPINE PAVILION	DESIGNER:	MIR
	DATE:	2025/08/07	REVISION:	00
	LOCATION:	TOKYO BIG SIGHT, TOKYO, JAPAN	SHEET NO.	15

IMPORTANT REQUIREMENT

I. MAIN CONSTRUCTION / FABRICATION / INSTALLATION / DISMANTLING		TOTAL QTY.
I.A) PAVILION CARPET (6.00m x 15.00m) CHARCOAL GRAY	SEE DETAILS	90 SQ.M.
I.B) OVERHEAD STRUCTURE	SEE DETAILS	1 LOT
I.C) STRUCTURE 1 (STORAGE AND EXHIBITORS)	SEE DETAILS	1 LOT
I.D) STRUCTURE 2 (EXHIBITORS)	SEE DETAILS	1 LOT
I.E) RECEPTION TABLE	SEE DETAILS	1 SET

II. ELECTRICALS		TOTAL QTY.
II.A) 20W LED SPOTLIGHT (3000K) - BLACK CASING	SEE DETAILS	11 PCS.
II.B) 50W LED FLOOD LIGHTS (3000K) - BLACK CASING	SEE DETAILS	52 PCS.
II.C) FLOURECENT LIGHT	SEE DETAILS	2 PCS.
II.D) 3 GANG CONVENIENCE OUTLET / 3 PRONG CONVENIENCE OUTLET	SEE DETAILS	18 PCS.
II.E) CIRCUIT BREAKER - CONTRACTOR TO PROVIDE RATING	SEE DETAILS	2 PCS.
II.F) PAVILION ELECTRICAL CONNECTION AND CONSUMPTION (WHOLE DURATION OF THE SHOW - INGRESS TO EVENT PROPER AND EGRESS)		1 LOT

III. FURNITURE RENTAL		TOTAL QTY.
III.A) STANDARD WHITE STACKING CHAIR (2 PER EXHIBITOR, 2 FOR STORAGE AREA)		22 PCS.
III.B) GLASS TOP NEGOTIATION TABLE (60cm DIA.)		10 PCS.
III.C) WHITE BAR STOOL WITH BACKREST - FOR RECEPTION		3 PCS.
III.D) IKEA SKRUVBY CABINET WITH DOORS (WHITE) 70cm x 90cm - STORAGE AREA		1 PC.
III.E) IKEA HÖVOLM RACK WITH 6 KNOBS (OAK) - STORAGE AREA		2 PCS.

III.D) IKEA SKRUVBY CABINET WITH DOORS
(WHITE) 70cm x 90cm - STORAGE AREA

<https://www.ikea.com/jp/en/p/skruby-cabinet-with-doors-white-00508857/>



III.E) IKEA HÖVOLM RACK WITH 6 KNOBS
(OAK) - STORAGE AREA

<https://www.ikea.com/jp/en/p/hoevolm-rack-with-6-knobs-oak-90500060/>



IMPORTANT REQUIREMENT

IV. EQUIPMENT AND PROPS RENTAL		TOTAL QTY.
IV.A) MEDIUM SIZE TRASH BIN WITH LID AND GARBAGE BAG (BLACK OR CHROME) - 2 FOR STORAGE AREA , 1 FOR RECEPTION, 1 PER EXHIBITOR		19 PCS.
IV.B) HOT AND COLD WATER DISPENSER (BOTTOM LOAD) - STORAGE AREA		1 UNITS
IV.C) WATER GALLON PER DAY (5 GAL./DAY)		25 GAL.
IV.D) COMMERCIAL COFFEE MAKER (80 TO 100 CUPS)		1 SET
IV.E) PAPER CUPS & STIRRER		600 CUPS/SET
IV.F) COFFEE BAG, CREAMER & SUGAR WITH CONDIMETS ORGANIZER (ANY BRAND)		6 BAGS
IV.G) LARGE POTTED PLANT (INDOOR)		4 UNITS
IV.H) TABLE TOP PLANTS		10 UNITS
IV.I) 50" LED TV		1 UNIT
IV.J) IBM TABLE WITH CLOTH - STORAGE AREA		1 UNIT
IV.K) MANPOWER SUPPORT FOR THE INSTALLATION OF EXHIBITORS PRODUCT		1 LOT
IV.L) PURCHASE AND SHIPPING OF CUSTOM TAPESTRY PAPER TO THE SUPPLIER FOR THE PAVILION STRUCTURE AND OVERHEAD (SEE DETAILS)		1 LOT

V. GRAPHICS AND LETTER CUTOUTS		TOTAL QTY.
V.A) DIGITAL PRINT STICKER CUT-OUT	STRUCTURE 1 AND 2	30 SQ.M.
V.B) BACKLIGHT 3D LOGO CUT-OUT (2.81m x 0.05m x 0.45m HT)	OVERHEAD STRUCTURE	3 SA1:K43ETS

IV.B) HOT AND COLD WATER DISPENSER (BOTTOM LOAD) - STORAGE AREA



IV.E) PAPER CUPS & STIRRER



IV.F) COFFEE BAG, CREAMER & SUGAR WITH CONDIMETS ORGANIZER (ANY BRAND)



IV.G) LARGE POTTED PLANT (INDOOR) SIMILAR FROM THE REFERENCE IMAGE



IV.H) TABLE TOP PLANTS SIMILAR FROM THE REFERENCE IMAGE



IV.J) IBM TABLE WITH CLOTH STORAGE AREA

