

FOOD Philippines

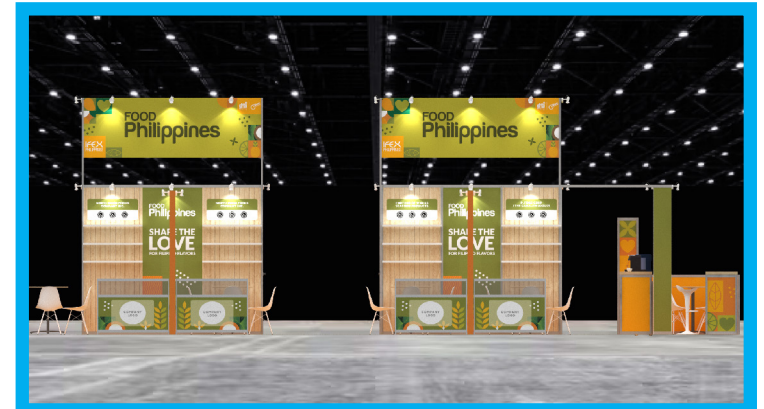
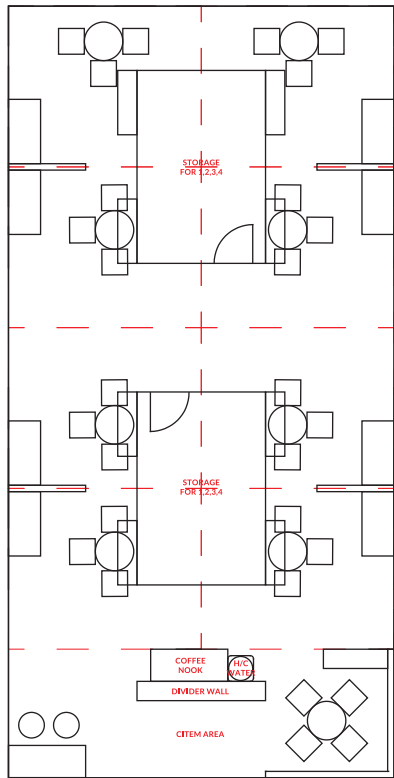


winter
fancy food show

LAS VEGAS, NEVADA
19-21 JANUARY 2025



WFFS 2025
PHILIPPINE PAVILION



PERSPECTIVE VIEWS

WFFS 2025
PHILIPPINE PAVILION



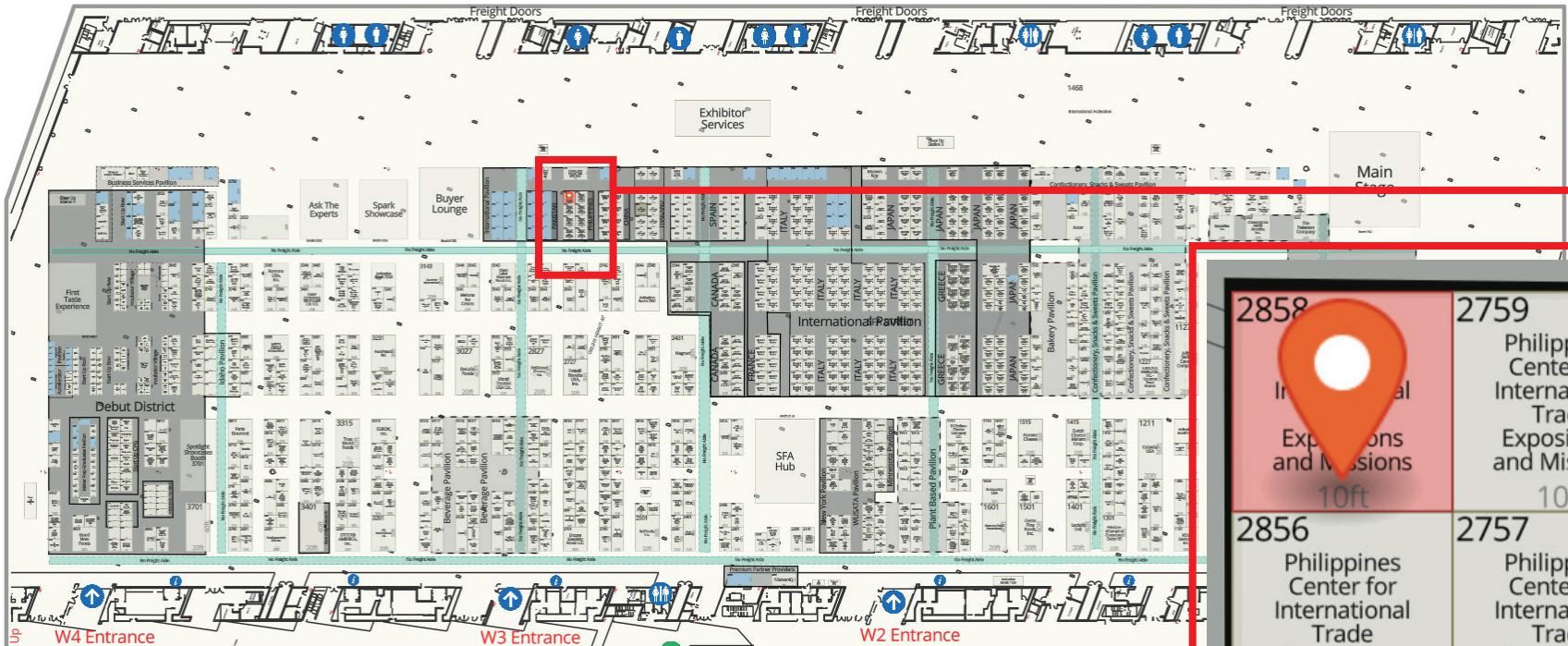
DETAILS

FOOD Philippines



PHILIPPINE PAVILION TECHNICAL DRAWINGS

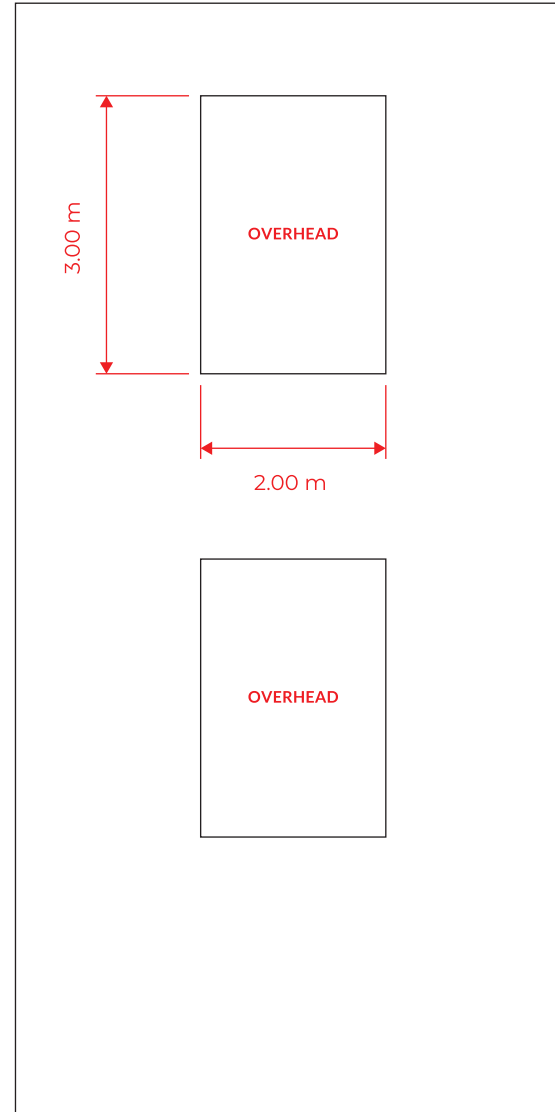
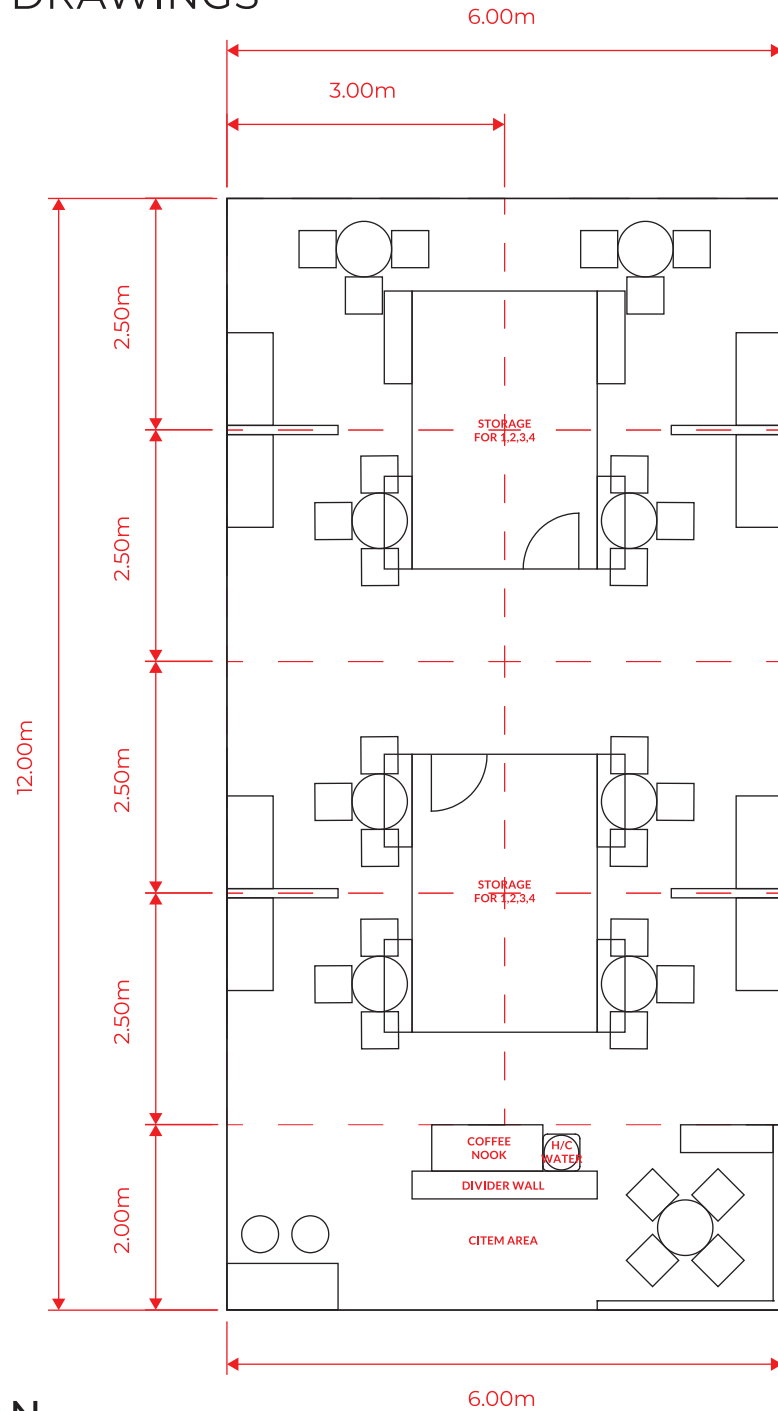




72 sqm
WEST HALL 2858

 2858 Philippines Center for International Trade Expositions and Missions 10ft	2759 Philippines Center for International Trade Expositions and Missions 10ft	PHILIPPINES
2856 Philippines Center for International Trade Expositions and Missions 10ft	2757 Philippines Center for International Trade Expositions and Missions 10ft	
2854 Philippines Center for International Trade Expositions and Missions 10ft	2755 Philippines Center for International Trade Expositions and Missions 10ft	
2852 Philippines Center for International Trade Expositions and Missions 10ft	2753 Philippines Center for International Trade Expositions and Missions 10ft	

WFFS 2025 - PHILIPPINE PAVILION
 TECHNICAL DRAWINGS






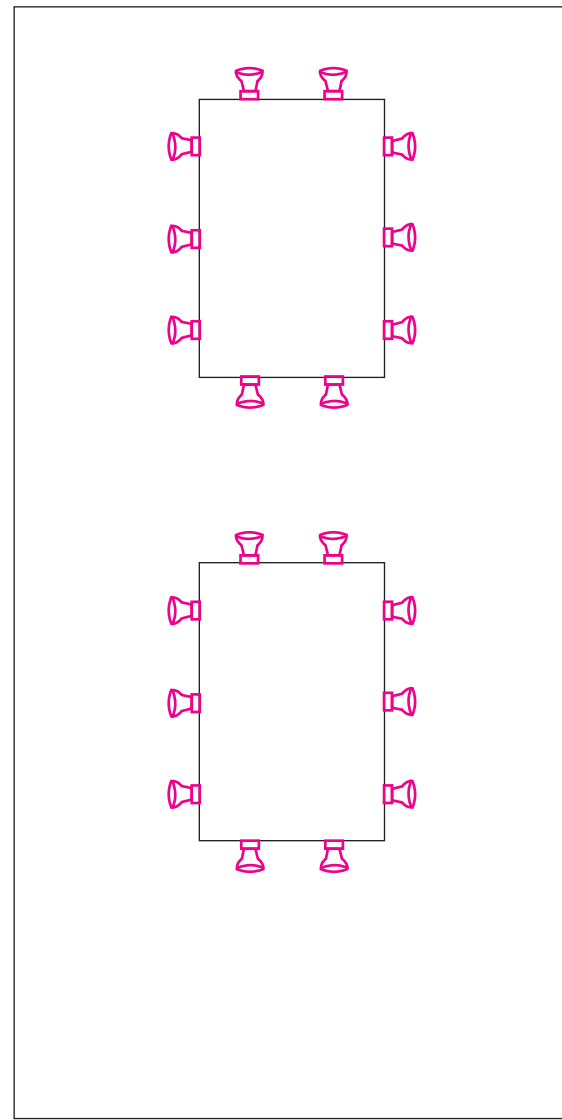
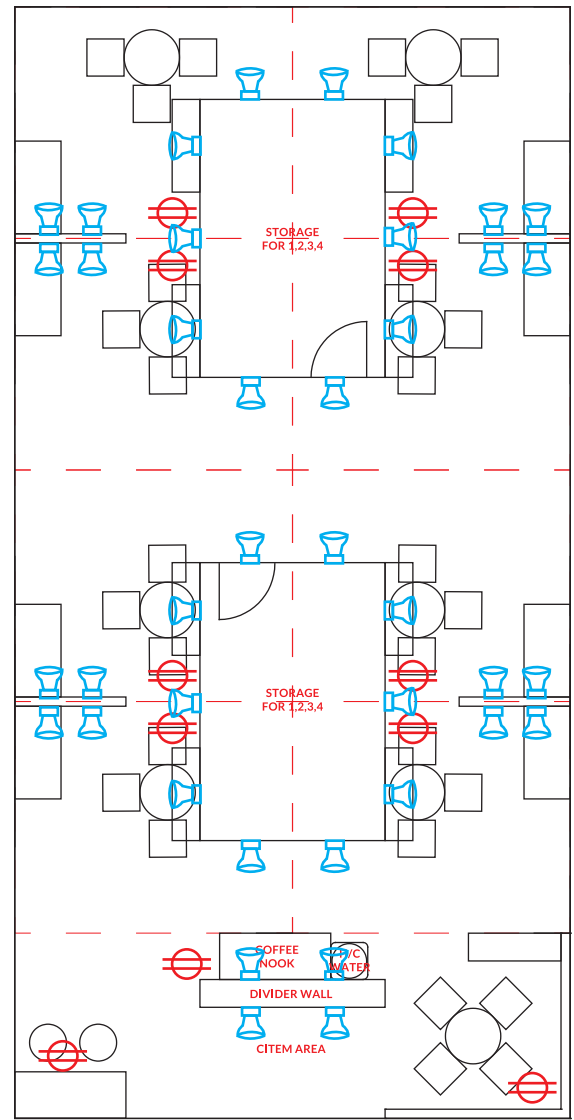
LAYOUT PLAN

	PROJECT:	WFFS 2025
	TITLE:	PHILIPPINE PAVILION
DESIGNED BY:	LOCATION:	LAS VEGAS, NEVADA
DATE/TIME:	LOCATION:	LAYOUT PLAN
12.11.24		SHEET NO: 01

WFFS 2025 - PHILIPPINE PAVILION
 TECHNICAL DRAWINGS


LEGEND:

-  SPOTLIGHTS (40 UNITS)
-  SPOTLIGHTS - OVERHEAD (20 UNITS)
-  ELECTRICAL OUTLETS (11 UNITS)

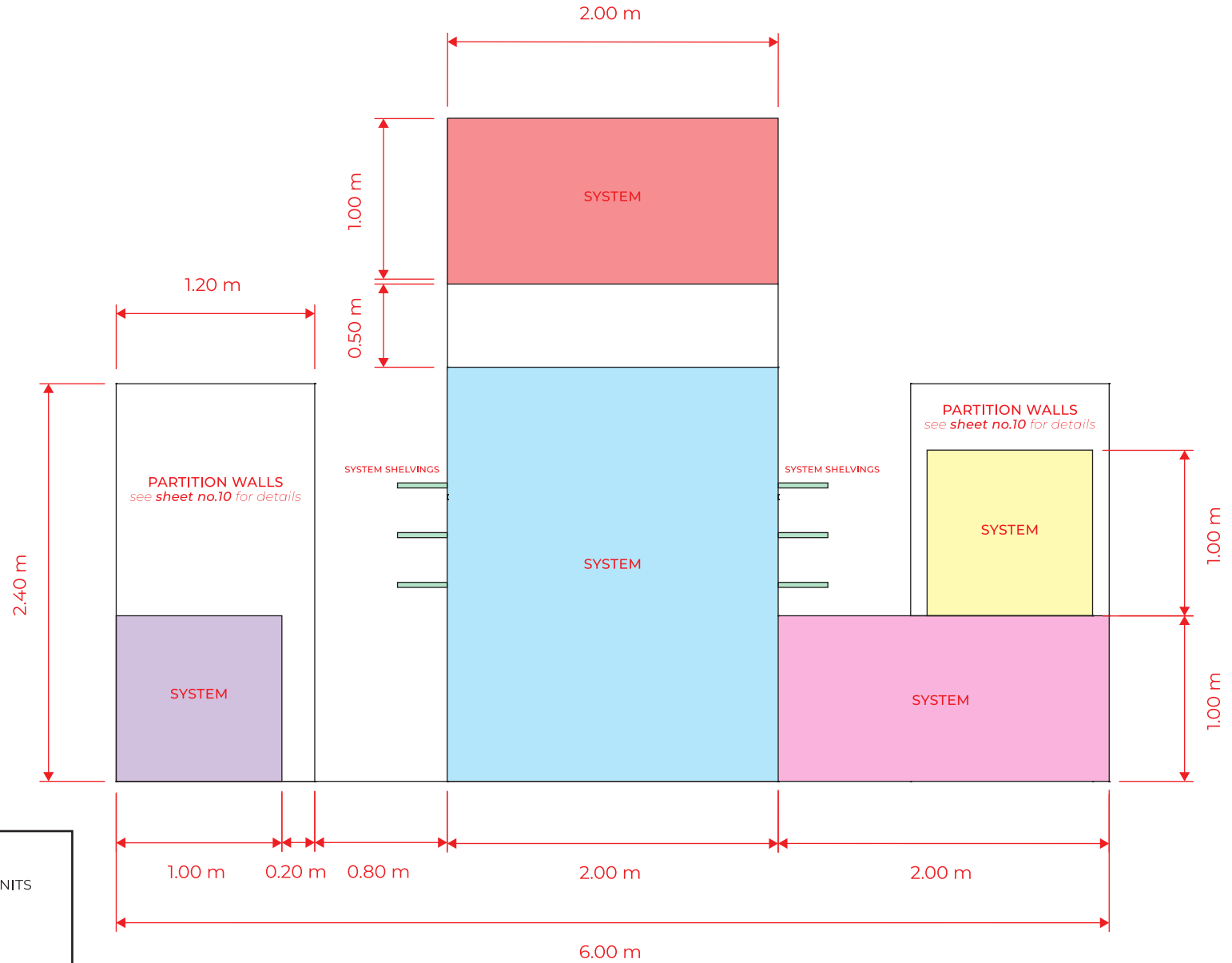
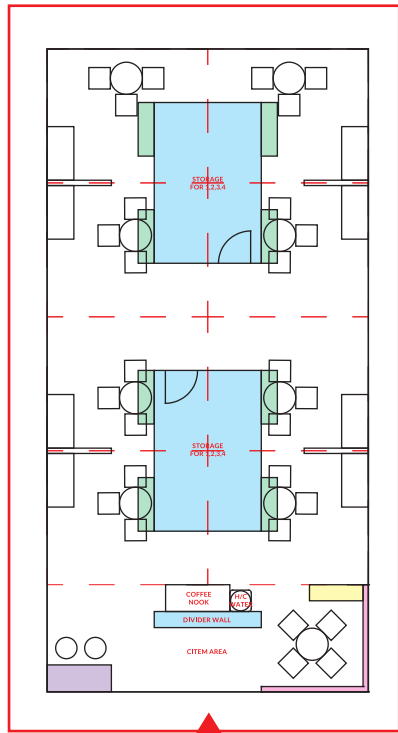


NOTE:
 *CONTRACTOR TO PROVIDE APPROPRIATE CIRCUIT BREAKERS AND PROVIDE RATING

LIGHTING & ELECTRICAL PLAN

	PROJECT:	WFFS 2025
	TITLE:	PHILIPPINE PAVILION
DESIGNED BY:	LOCATION:	LAS VEGAS, NEVADA
DATE/TIME:	LOCATION:	LIGHTING & ELECTRICAL PLAN
12.11.24		SHEET NO: 02

WFFS 2025 - PHILIPPINE PAVILION
 TECHNICAL DRAWINGS



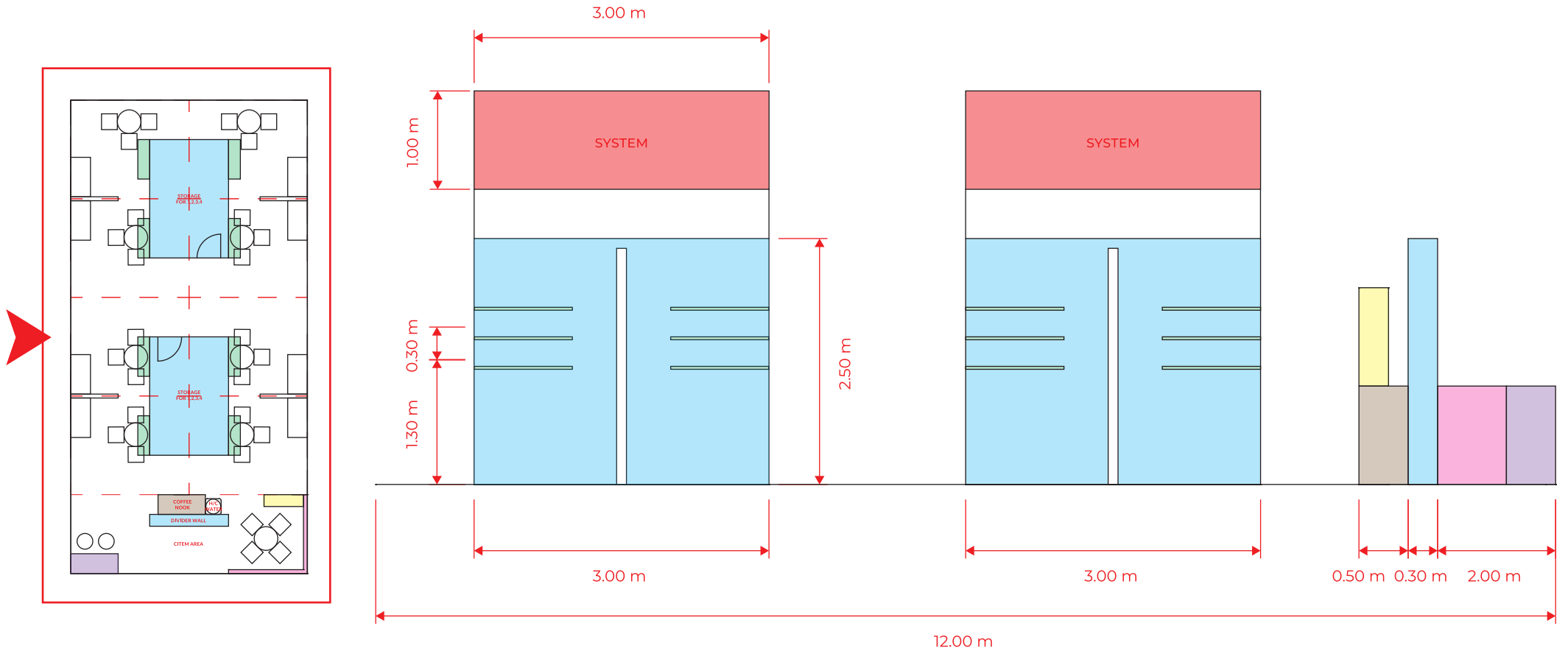
LEGEND:

- SYSTEM OVERHEAD (2.00m x 3.00m x 1.00mH) - 2 UNITS
- SYSTEM (1.00m x 2.50mH)
- SYSTEM (2.00m x 1.00mH) - 2 UNITS
- SYSTEM (1.00m x 0.30m x 1.00mH) - 2 UNITS
- SYSTEM CITEM COUNTER (1.00m x 0.50m x 1.00mH) - 1 UNIT
- BOOTH SYSTEM SHELVINGS - 24 UNITS

FRONT ELEVATION

	PROJECT:	WFFS 2025
	TITLE:	PHILIPPINE PAVILION
DESIGNED BY:	LOCATION:	LAS VEGAS, NEVADA
DATE/TIME:	LOCATION:	ELEVATION
12.11.24		SHEET NO: 03

WFFS 2025 - PHILIPPINE PAVILION
 TECHNICAL DRAWINGS

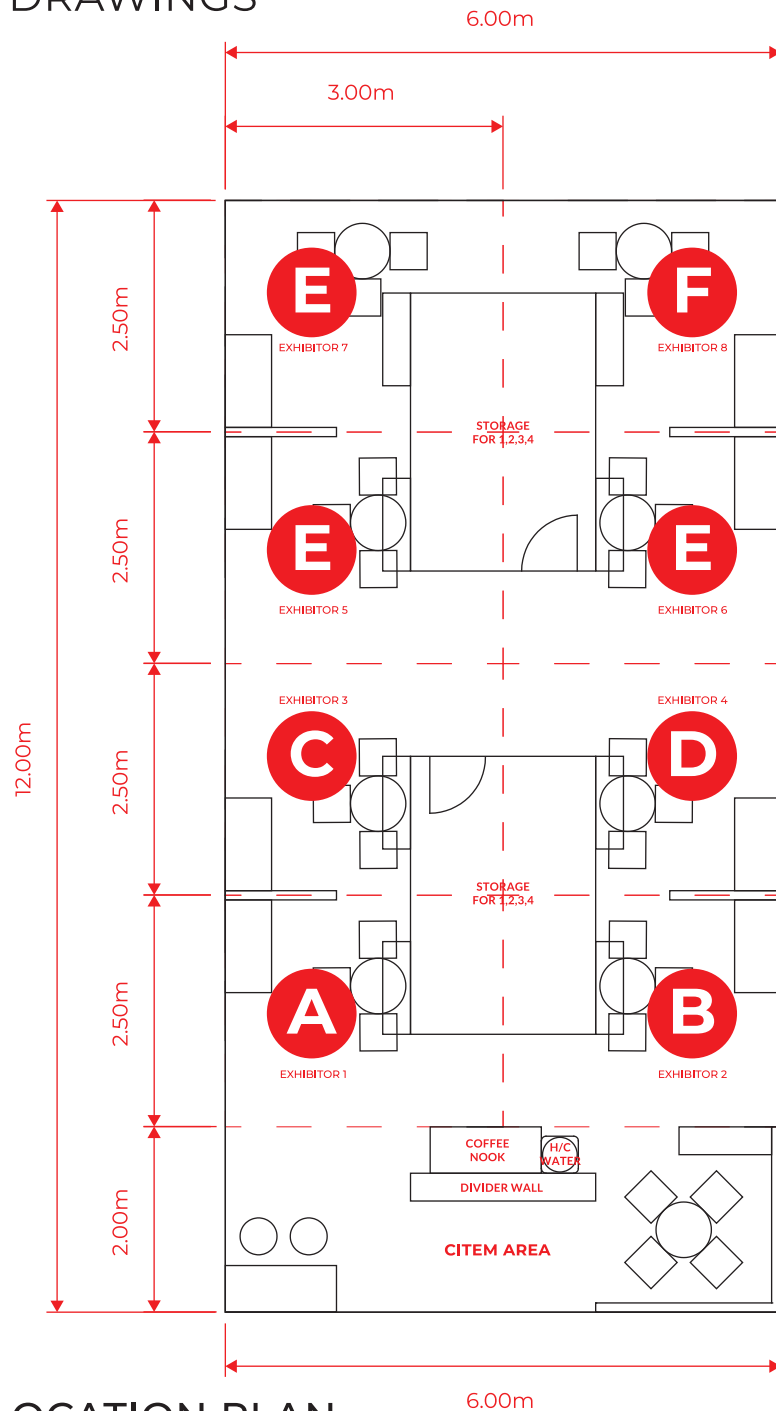


- LEGEND:**
- SYSTEM OVERHEAD (2.00m x 3.00m x 1.00mH) - 2 UNITS
 - SYSTEM (1.00m x 2.50mH)
 - SYSTEM (2.00m x 1.00mH) - 2 UNITS
 - SYSTEM (1.000m x 0.30m x 1.00mH) - 2 UNITS
 - SYSTEM CITEM COUNTER (1.00m x 0.50m x 1.00mH) - 1 UNIT
 - BOOTH SYSTEM SHELVINGS - 24 UNITS
 - SYSTEM COFFEE NOOK COUNTER - 1 UNIT

SIDE ELEVATION

	PROJECT:	WFFS 2025
	TITLE:	PHILIPPINE PAVILION
DESIGNED BY:	LOCATION:	LAS VEGAS, NEVADA
DATE/TIME:	LOCATION:	ELEVATION
12.11.24		SHEET NO: 04

WFFS 2025 - PHILIPPINE PAVILION
 TECHNICAL DRAWINGS

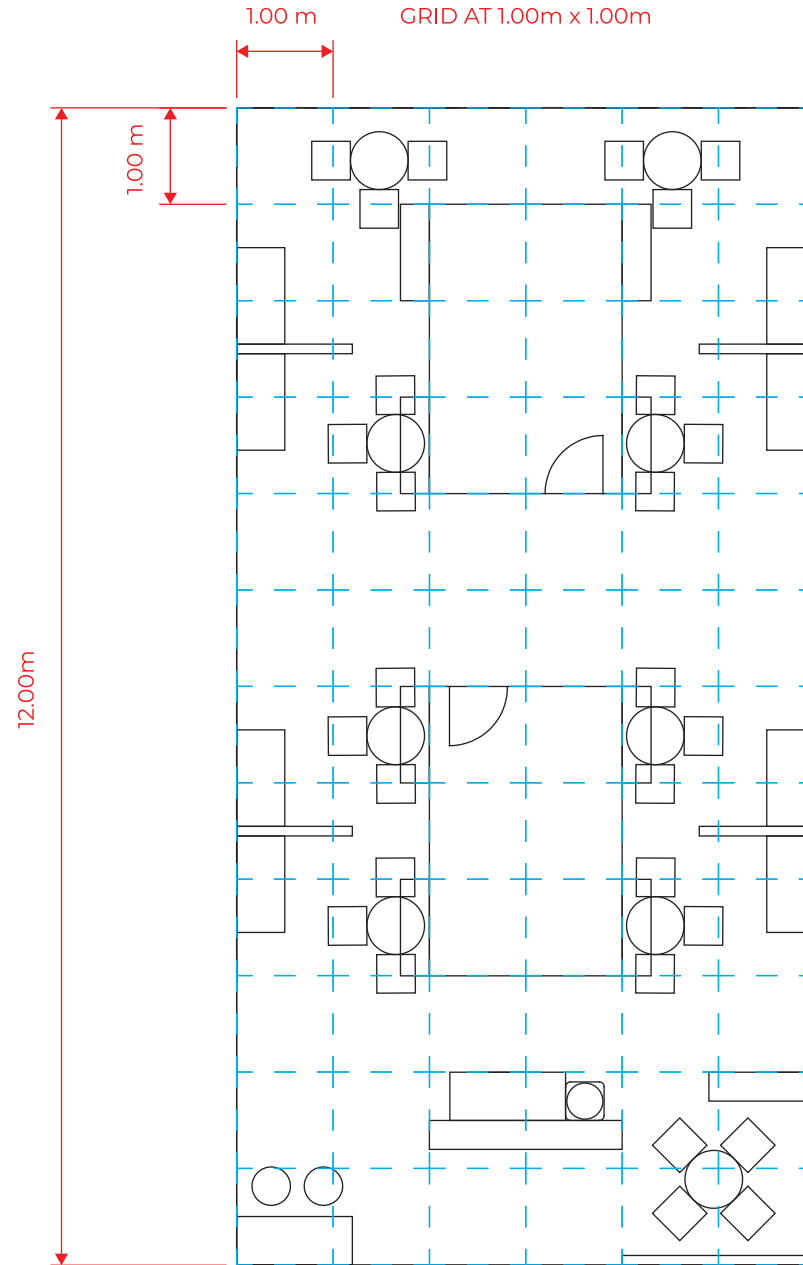


- A** EXHIBITOR 1 P.Togo Corp (The Cabalen Group)
- B** EXHIBITOR 2 Islamic Da'wah Council Of The Philippines (IDCP)
- C** EXHIBITOR 3 Fortune of Wishes Seafood Products
- D** EXHIBITOR 4 Profood International Corporation
- E** EXHIBITOR 5-7 North Ridge Foods Company Inc.
- F** EXHIBITOR 8 Cale88 Food Corporation

EXHIBITOR LOCATION PLAN

	PROJECT:	WFFS 2025
	TITLE:	PHILIPPINE PAVILION
DESIGNED BY:	LOCATION:	LAS VEGAS, NEVADA
DATE/TIME:	LOCATION:	SHEET NO.
12.10.24	LOCATION PLAN	05

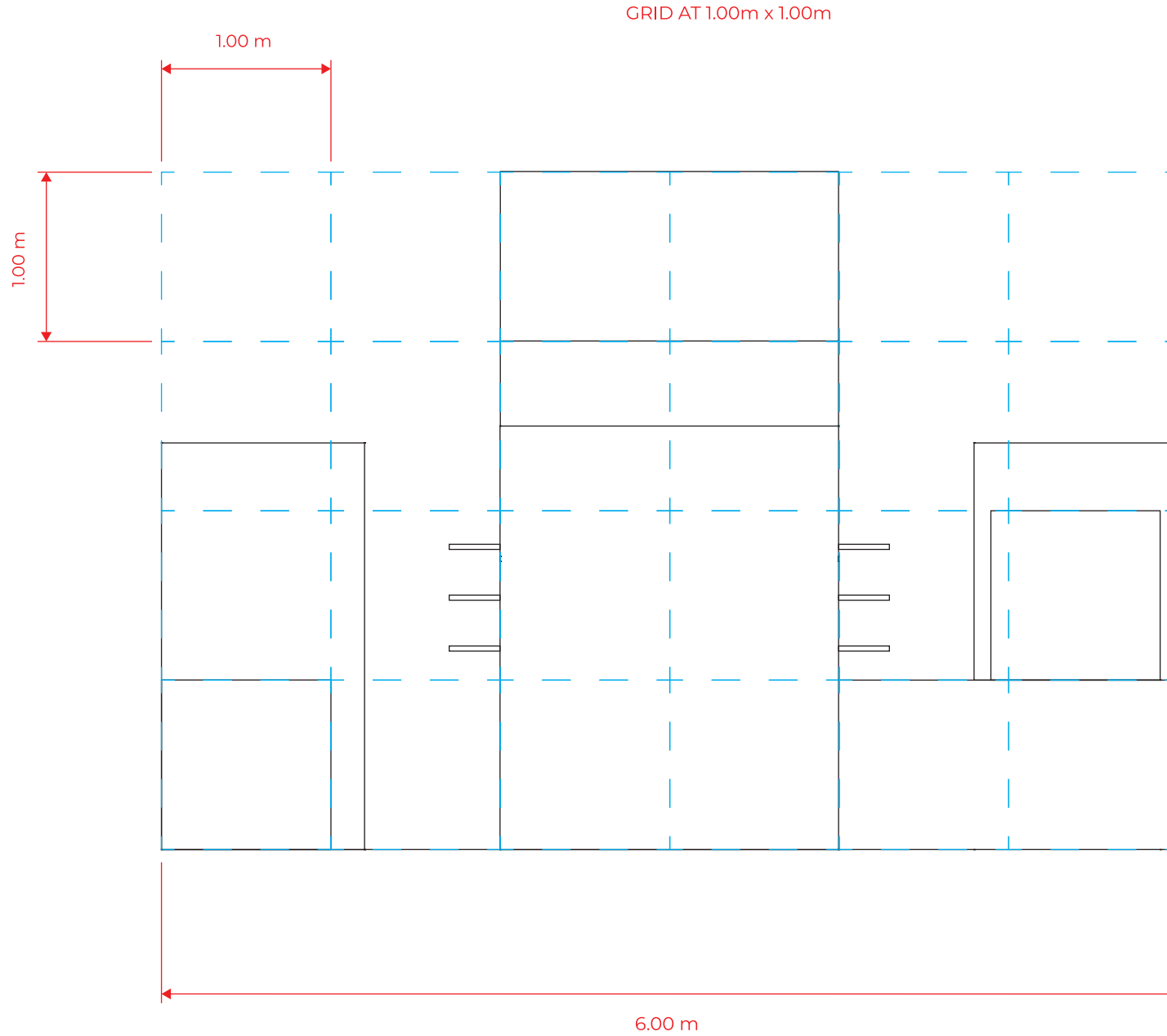
WFFS 2025 - PHILIPPINE PAVILION
TECHNICAL DRAWINGS




GRID LAYOUT PLAN

	PROJECT:	WFFS 2025
	TITLE:	PHILIPPINE PAVILION
DESIGNED BY:	LOCATION:	LAS VEGAS, NEVADA
DATE/TIME:	LOCATION:	LAYOUT PLAN
12.11.24		SHEET NO: 06

WFFS 2025 - PHILIPPINE PAVILION
TECHNICAL DRAWINGS

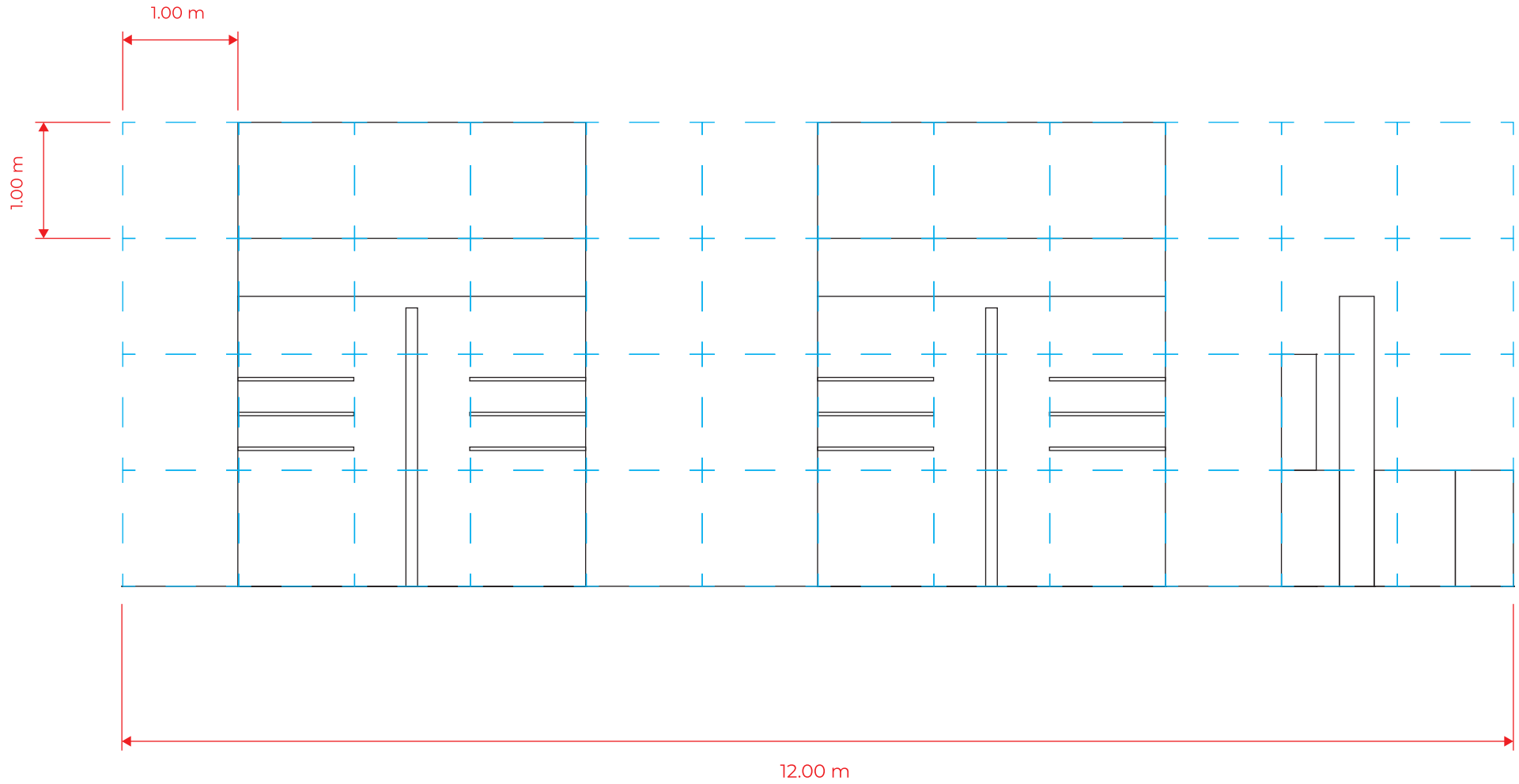


GRID LAYOUT PLAN

	PROJECT:	WFFS 2025	
	TITLE:	PHILIPPINE PAVILION	
DESIGNED BY:	LOCATION:	LAS VEGAS, NEVADA	
DATE/TIME:	LOCATION:	ELEVATION	SHEET NO:
12.11.24			07

WFFS 2025 - PHILIPPINE PAVILION
TECHNICAL DRAWINGS

GRID AT 1.00m x 1.00m

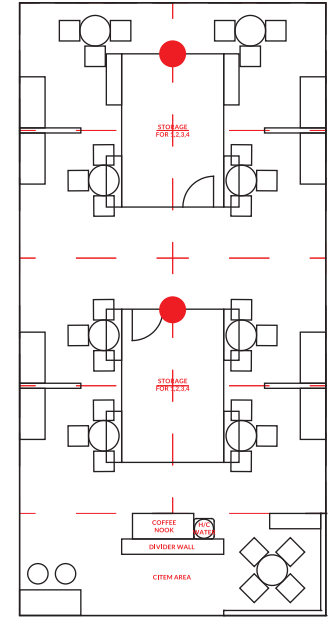
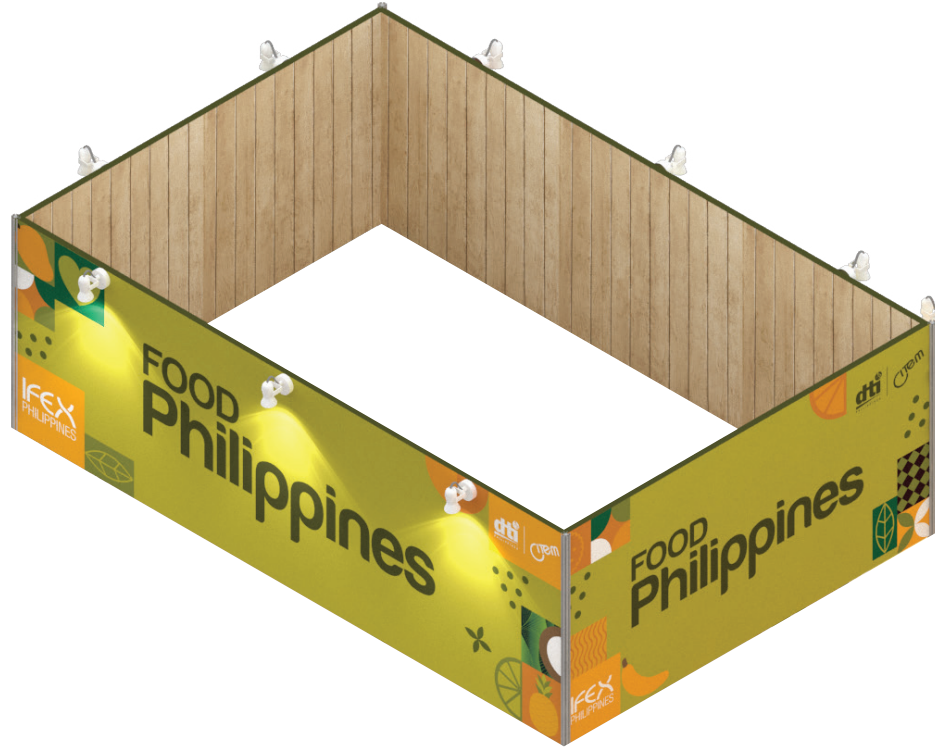
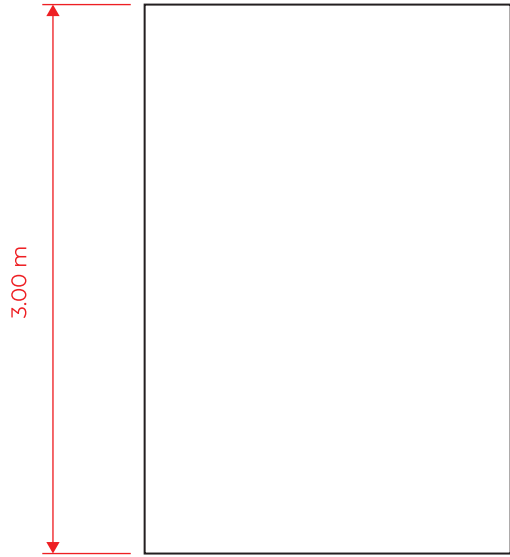


SIDE ELEVATION

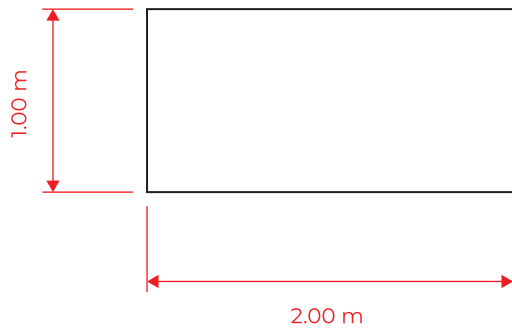
	PROJECT:	WFFS 2025	
	TITLE:	PHILIPPINE PAVILION	
DESIGNED BY:	LOCATION:	LAS VEGAS, NEVADA	
DATE/TIME:	LOCATION:	ELEVATION	SHEET NO: 08

WFFS 2025 - PHILIPPINE PAVILION
 TECHNICAL DRAWINGS

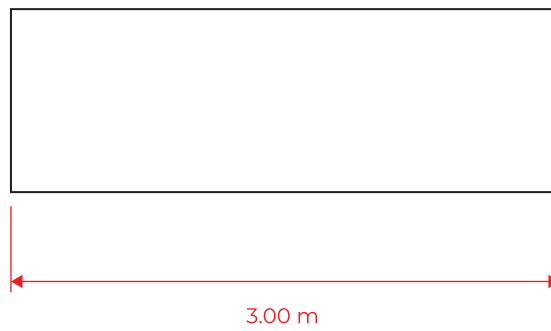
TOP



FRONT



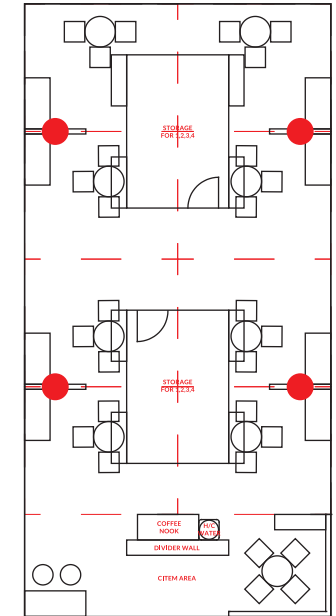
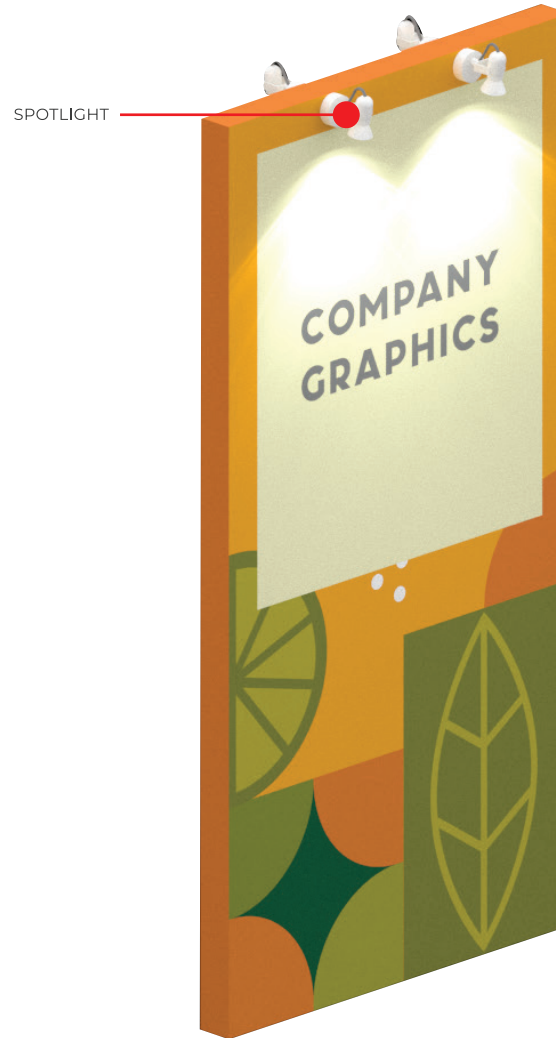
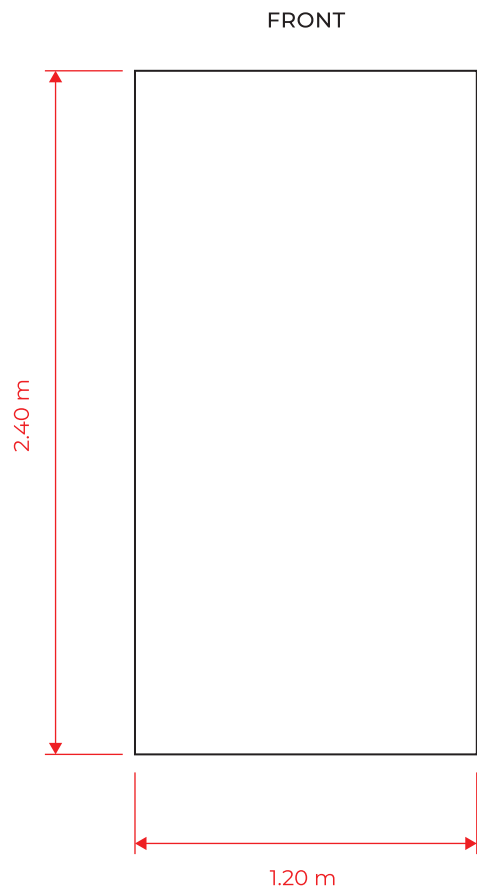
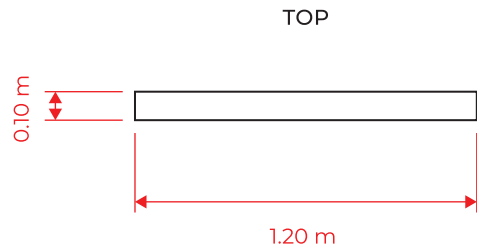
SIDE



2 LOTS
 OVERHEAD DETAILS

	PROJECT:	WFFS 2025
	TITLE:	PHILIPPINE PAVILION
DESIGNED BY:	LOCATION:	LAS VEGAS, NEVADA
DATE/TIME:	LOCATION:	OVERHEAD DETAILS
12.11.24		SHEET NO. 09

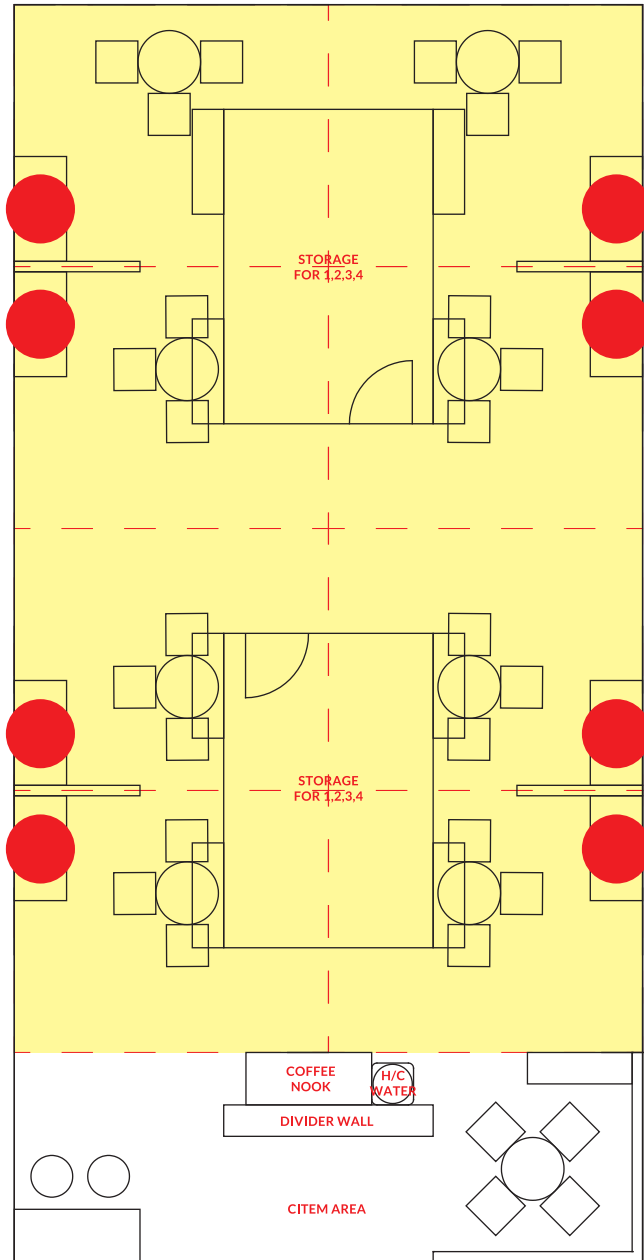
WFFS 2025 - PHILIPPINE PAVILION
 TECHNICAL DRAWINGS



4 UNITS
 PARTITION DETAILS

	PROJECT:	WFFS 2025
	TITLE:	PHILIPPINE PAVILION
DESIGNED BY:	LOCATION:	LAS VEGAS, NEVADA
DATE/TIME:	LOCATION:	PARTITION DETAILS
12.11.24		SHEET NO: 10

WFFS 2025 - PHILIPPINE PAVILION
 TECHNICAL DRAWINGS



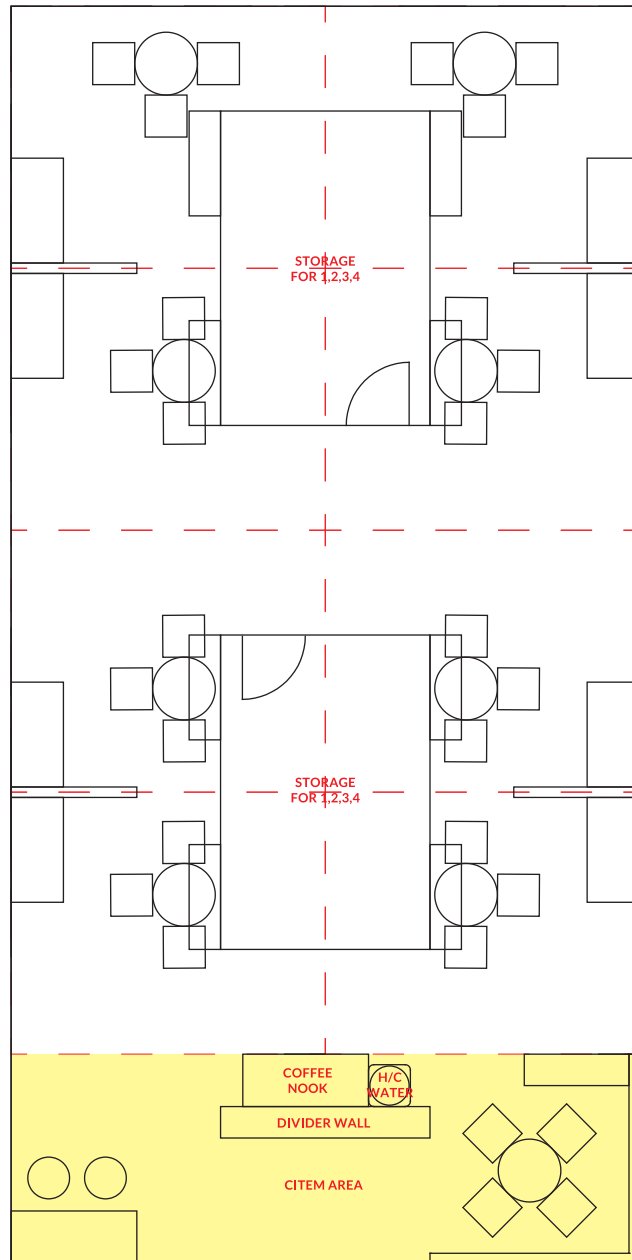
8 UNITS
 LOCATION PLAN



- PER BOOTH AMENITIES:**
- DISPLAY SHOWCASE - 1 UNIT
 - SHELVINGS - 3 UNITS
 - ROUND TABLE - 1 UNIT
 - CHAIRS - 3 UNITS
 - SPOTLIGHTS - 4 UNITS
 - TRASHBIN - 1 UNIT
 - OUTLET - 1 LOT
 - STORAGE AREA

CITEM	PROJECT:	WFFS 2025
	TITLE:	PHILIPPINE PAVILION
DESIGNED BY:	LOCATION:	LAS VEGAS, NEVADA
DATE/TIME:	LOCATION:	LOCATION PLAN
12.11.24		SHEET NO: 11

WFFS 2025 - PHILIPPINE PAVILION
 TECHNICAL DRAWINGS



1 LOT
CITEM AREA

COFFEE NOOK AREA
 (AT THE BACK OF DIVIDER WALL)



- CITEM AREA AMENITIES:**
- SYSTEM INFO COUNTER - 1 UNIT
 - BAR STOOL - 2 UNITS
 - ROUND TABLE - 1 UNIT
 - CHAIRS - 4 UNITS
 - SPOTLIGHTS - 4 UNITS (DIVIDER WALL)
 - TRASHBIN - 2 UNITS
 - OUTLET - 2 LOTS
 - COFFEE NOOK AREA
 - DIVIDER WALL - 1 LOT
 - LOW WALL - 1 LOT
 - PARTITION WALL - 1 LOT

CITEM	PROJECT:	WFFS 2025
	TITLE:	PHILIPPINE PAVILION
DESIGNED BY:	LOCATION:	LAS VEGAS, NEVADA
DATE/TIME:	LOCATION:	LOCATION PLAN
12.11.24		SHEET NO: 12

PAVILION				
ITEM NO.	PARTICULARS	QTY	UNIT	DESCRIPTION
1	PAVILION STRUCTURE	1	LOT	6.00m x 12.00m x 4.00mH System Panels with Overhead, Storage Area and Graphics
2	FLOORING	1	LOT	6.00m x 12.00m Beige Carpet (or any available near Beige Color)
3	CITEM INFO COUNTER	1	UNIT	1.00m x 0.50m x 1.00mH System Information Counter with Graphics
4	EXHIBITOR DISPLAY SHOWCASE	8	UNITS	1.20m x 0.60m x 0.90mH System Display Showcase Counters with Graphics
5	COFFEE NOOK TABLE	1	UNIT	1.00m x 0.50m x 1.00mH System Counter Table with Storage with Graphics
6	SHELVINGS	24	UNITS	System Shelvings (3 per exhibitor)
7	EXHIBITOR GRAPHICS	8	UNITS	1.00m x 1.20mH Company Graphics (Mounted in Partition Walls)
8	PARTITION WALLS	4	UNITS	1.20m x 2.40mH (Free Standing Wooden Partition Wall with Graphics)
9	ROUND TABLES	9	UNITS	0.60 Diameter Table
10	CHAIRS	28	UNITS	Standard White Chair
11	BAR STOOL	2	UNITS	White Bar Stool for CITEM Info Counter
12	COMPANY NAME	8	UNITS	1.00m x 2.50mH Company Name Graphics (Mounted on System Panel)
13	SPOTLIGHTS	60	UNITS	30W Standard System Spotlight (White Casing) - Daylight
14	OVERHEAD	2	LOTS	2.00m x 3.00m x 1.00mH System Overhead with Graphics
15	ELECTRICAL OUTLETS	11	UNITS	300W Electrical Outlets 3-Gang
16	TRASHBIN	10	SETS	Trashbin with 1Allocated Trashbag Per Day
17	WATER DISPENSER	1	UNIT	Hot and Cold Water Dispenser (Floor Standing - Placed beside Coffee Nook Area)
18	WATER GALLON	25	GAL	Water Gallon Per Day (5 GAL/Day)
19	COFFEE MAKER	1	UNIT	Commercial Coffee Maker (Placed in Coffee Nook Area)
20	PAPER CUPS & STIRRER	600	CUPS/SETS	Coffee Condiments Organizer (Placed in Coffee Nook Area)
21	COFFEE/CREAMER	6	BAGS	Coffe Bag, Creamer & Sugar (Placed in Coffee Nook Area)
22	CIRCUIT BREAKER	1	LOT	Contractor to provide appropriate circuit breaker for all electrical requirements of the pavilion
23	ELECTRICAL CONSUMPTION	1	LOT	Contractor to provide electricity for the pavilion for the duration of the show (electrical consumption to be estimated by contractor with each convenience outlet having 300watts allocation per day).
FOR OPENING CEREMONY				
24	MICROPHONE	2	UNITS	Microphone for Opening Ceremony
25	FULL RANGE HOUSE SPEAKER	1	SET	House Speakers for Opening Ceremony
26	MULTI CHANNEL MIXER	1	LOT	Multi Channel Mixer with Laptop Connected LED TV and Speakers (Must be compatible to play MP3/MP4)
27	FLOWERS ON STAND	2	SETS	Flowers on Stand
28	RIBBON SET-UP	1	LOT	Ribbon Set-Up
29	GOLD SCISSORS	8	PCS	Gold Scissors
30	HELPERS	2	PAX	Helper/Technician, assist during Opening Ceremony
NOTE				
PLEASE INCLUDE ELECTRICAL CONSUMPTION FOR THE DURATION OF THE SHOW (INGRESS TO EVENT PROPER TO EGRESS				
INCLUDE ALL APPROPRIATE TAXES IN QUOTATION				
SEE TECHNICAL DRAWINGS FOR ACTUAL DETAILS				